

The Integration of AI and Machine Learning in Instrument Clusters: Making Vehicles Smarter

Darshak Sanghavi

USA

ABSTRACT

The automotive industry is undergoing a transformative shift as artificial intelligence (AI) and machine learning (ML) technologies are increasingly being integrated into vehicle instrument clusters. These integrations enable vehicles to become smarter, providing a more intuitive, personalized, and efficient driving experience. AI-powered systems within instrument clusters can leverage predictive maintenance algorithms, adapt to driver behavior, and enhance real-time hazard detection, significantly improving vehicle safety and operational efficiency. This paper explores the role of AI and ML in revolutionizing instrument clusters, detailing their potential applications in predictive analytics, adaptive interfaces, and automated system adjustments, and discusses how these advancements are reshaping the future of automotive technology.

*Corresponding author

Darshak Sanghavi, USA.

Received: December 07, 2023; **Accepted:** December 14, 2023; **Published:** December 21, 2023

Keywords: AI-Driven Predictive Analytics, Machine Learning, Adaptive Interfaces, Real-Time Decision-Making, Predictive Maintenance, Personalized Suggestions, Vehicle Safety, Smart Instrument Clusters, Automotive Technology, AI in Vehicles

Introduction

The integration of AI and machine learning (ML) into vehicle instrument clusters is at the forefront of transforming automotive technology. Traditional instrument clusters, which display basic information such as speed, fuel levels, and engine status, are evolving into dynamic, intelligent systems capable of offering a more personalized and responsive driving experience. AI and ML enable these clusters to analyze data in real-time, make predictive decisions, and dynamically adjust their interfaces based on driver behavior. This transformation is key to improving safety, convenience, and overall driving satisfaction.

As AI technologies continue to advance, their potential for enhancing vehicle instrument clusters is vast. From predictive maintenance that helps prevent vehicle breakdowns to adaptive interfaces that respond to individual driving styles, the role of AI in the automotive industry is expanding. In this paper, we will examine how AI and ML are integrated into instrument clusters, exploring their current and future applications, challenges, and implications for the automotive industry.



Figure 1: Automotive AI and Machine Learning. Adapted from [1].

AI-Driven Predictive Analytics for Maintenance and Diagnostics

One of the most impactful applications of AI and ML in vehicle instrument clusters is predictive maintenance. Traditional vehicle maintenance relies on scheduled service intervals or symptoms that indicate a problem. However, AI-driven predictive maintenance can analyze data from the vehicle's sensors, onboard diagnostics, and past performance to predict potential issues before they arise. By doing so, it can notify drivers of upcoming maintenance needs, reducing the risk of unexpected breakdowns and improving vehicle longevity.

For example, AI algorithms can monitor the condition of critical components such as brakes, tires, and the engine, and predict when these parts are likely to need servicing. By analyzing patterns in usage and environmental factors, these systems can provide maintenance recommendations tailored to the vehicle's specific needs, thereby enhancing the efficiency of the vehicle and reducing unnecessary service visits [2].

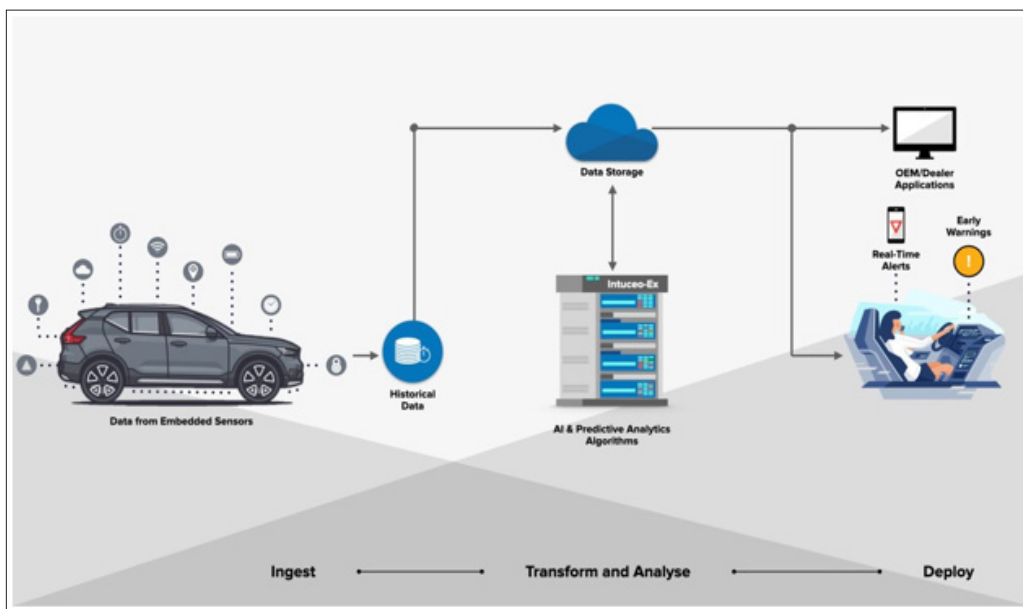


Figure 2: AI applications in predictive maintenance. Adapted from [3].

Adaptive Interfaces Based on Driver Behavior

AI and ML can also be used to create adaptive interfaces within the instrument cluster that adjust based on a driver's behavior, preferences, and habits. Over time, these systems learn from the driver's interactions with the vehicle, making suggestions and presenting relevant information that enhances the driving experience.

For instance, AI-driven instrument clusters can monitor a driver's speed patterns, preferred route choices, and in-car climate settings, then automatically adjust the display to show the most relevant information. This could include highlighting upcoming turns on a familiar route or adjusting the layout of the cluster to focus on critical information, such as fuel levels or battery charge, when needed.

Additionally, machine learning models can recognize when a driver is fatigued or distracted and provide personalized prompts to help maintain focus and alertness. By creating more personalized driving environments, AI and ML can improve comfort, reduce cognitive load, and enhance safety [4].

Real-Time Hazard Detection and Safety Enhancements

AI-powered instrument clusters are also improving vehicle safety by enhancing real-time hazard detection. By integrating data from cameras, radar, and other sensors, these systems can identify potential hazards in the vehicle's environment, such as pedestrians, other vehicles, or obstacles, and provide immediate alerts to the driver.

For example, machine learning algorithms can be trained to recognize various road conditions and objects, using this data to trigger warnings for drivers when potential collisions are imminent. This real-time decision-making capability can help prevent accidents by giving drivers more time to react to hazardous situations.

Moreover, AI-driven systems can assist in emergency situations by suggesting the best course of action, such as braking, steering, or accelerating. By leveraging AI for hazard detection and decision-making, instrument clusters can contribute significantly to improving overall vehicle safety [5].

Personalized Suggestions and Automated System Adjustments

Personalization is a growing trend in automotive technology, and AI is at the heart of this movement. By analyzing data from the driver's interactions with the vehicle, the system can offer personalized suggestions to improve the driving experience. These suggestions might include optimizing routes based on traffic patterns, adjusting cabin temperature according to the driver's preferences, or recommending eco-friendly driving habits to reduce fuel consumption.

AI-powered systems can also make automated adjustments to the vehicle's systems. For example, if the vehicle detects that the driver is stressed or distracted, the AI system could adjust the ambient lighting, activate calming music, or even suggest a break. Such intelligent system responses are aimed at improving driver comfort and safety in real time [6].

Challenges in Integrating AI and ML into Instrument Clusters

While the integration of AI and ML into vehicle instrument clusters holds significant promise, it also presents several challenges. One of the primary concerns is data privacy and security. Vehicles generate a vast amount of data, including driving behavior, location, and vehicle performance. Ensuring that this data is securely handled and used responsibly is critical [7].

Moreover, the complexity of AI algorithms and machine learning models can pose challenges for implementation and continuous improvement. Ensuring that these systems operate reliably and efficiently across different vehicle models and driving conditions is a key challenge for automotive manufacturers.

Lastly, there are regulatory and ethical considerations regarding the use of AI in vehicles. As the industry advances, manufacturers must navigate the evolving regulatory landscape to ensure compliance with safety and privacy standards while developing AI-driven features [8].

Future Directions: The Evolving Role of AI in Automotive Instrument Clusters

The future of AI and ML in automotive instrument clusters is bright, with continued advancements expected to bring even more sophisticated capabilities. In addition to predictive maintenance, adaptive interfaces, and real-time hazard detection, future innovations may include:

- **Vehicle-to-Everything (V2X) Communication:** AI systems in instrument clusters will likely leverage V2X communication, allowing vehicles to communicate with other vehicles, infrastructure, and even pedestrians, enhancing situational awareness and safety [9].
- **Augmented Reality Dashboards:** The integration of AR with AI could transform instrument clusters into immersive, 3D displays that provide drivers with enhanced visual information about their surroundings and vehicle status [10].
- **Voice and Gesture Control:** AI-driven systems will further enable voice and gesture-based controls for a more intuitive and hands-free interaction with the vehicle's features. As these technologies mature, AI and machine learning will continue to revolutionize the way we interact with vehicles, driving smarter, safer, and more efficient transportation.

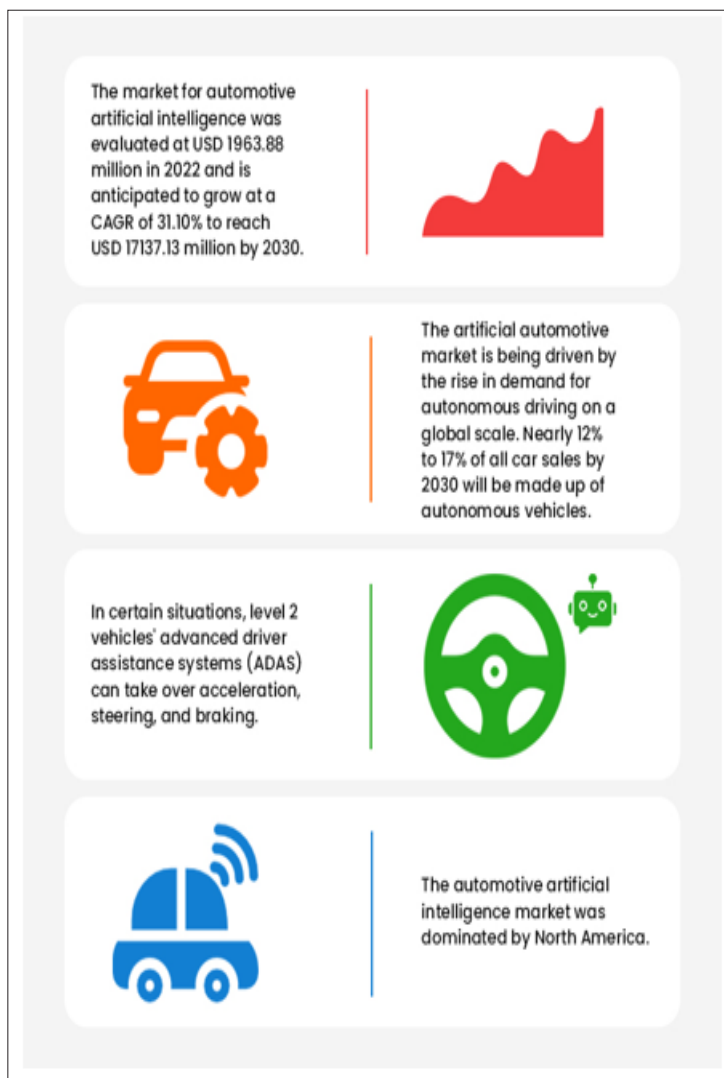


Figure 3: Automotive AI use cases. Adapted from [11].

Conclusion

AI and machine learning are playing a pivotal role in transforming automotive instrument clusters into smarter, more intuitive, and personalized systems. From predictive maintenance to real-time hazard detection and adaptive interfaces, these technologies are enhancing vehicle safety, improving the driving experience, and reducing maintenance costs. While challenges remain, the future of AI in automotive instrument clusters is promising, with continued advancements expected to bring even more sophisticated and personalized features. Automotive manufacturers and AI developers must collaborate closely to overcome these challenges and deliver innovative, reliable, and secure AI-driven systems that improve both driver and passenger experiences.

References

1. SoluLab (2020) Automotive AI and Machine Learning: Transforming the Industry. Blockchain Technology, Mobility, AI and IoT Development Company USA, Canada. Available at: <https://www.solulab.com/place-of-machine-learning-and-ai-in-automotive-industry/>.
2. Arena F, Collotta M, Luca L, Ruggieri M, Termine FG (2022) Predictive Maintenance in the Automotive Sector: A Literature Review. *Mathematical and Computational Applications* 27: 2.
3. Sharma D (2022) Application of AI in Predictive Maintenance of Vehicles. *Analytics Vidhya*. Available at: <https://www.analyticsvidhya.com/blog/2022/07/application-of-ai-in-predictive-maintenance-of-vehicles/>.
4. Brouwer RF, Marieka Hoedemaeker, Neerincx MA (2009) Adaptive Interfaces in Driving. *Lecture notes in computer science* pp: 13-19.
5. Jorge Murillo (2023) Deep Learning for Autonomous Vehicle Real-time Hazard Detection and Avoidance. *Journal of AI-Assisted Scientific Discovery* 3: 175-194.
6. Fusionmedium (2022) Mindtronic uses machine learning technology to create a personalized driving experience. Available at: <https://www.prnewswire.com/news-releases/mindtronic-uses-machine-learning-technology-to-create-a-personalized-driving-experience-301671306.html>.
7. Norton Rose Fulbright (2017) The Privacy Implications of Autonomous Vehicles. *Data Protection Report*. Available at: <https://www.dataprotectionreport.com/2017/07/the-privacy-implications-of-autonomous-vehicles/>.
8. Mary L Cummings (2023) What Self-Driving Cars Tell Us About AI Risks - *IEEE Spectrum*. Available at: <https://spectrum.ieee.org/self-driving-cars-2662494269>.
9. Christopoulou M, Barmounakis S, Koumaras H, Kaloxylou A (2023) Artificial Intelligence and Machine Learning as key enablers for V2X communications: A comprehensive survey. *Vehicular Communications* 39: 100569.
10. Cooley B (2019) Augmented reality is coming to your car. *Roadshow*. Available at: <https://www.cnet.com/roadshow/news/augmented-reality-is-coming-to-your-car/>.
11. Matellio (2023) Top Use Cases of AI in Automotive Industry. *Matellio Inc*. Available at: <https://www.matellio.com/blog/ai-use-cases-in-automotive-industry/>.

Copyright: ©2023 Darshak Sanghavi. This is an open-access article distributed under the terms of the Creative Commons Attribution License, which permits unrestricted use, distribution, and reproduction in any medium, provided the original author and source are credited.