

Original Article

Open Access

Diagnostic Accuracy of Immunological Markers for Detection of Allergens by Poly Check Techniques among Patients with Bronchial Asthma in Basrah, Southren of Iraq

Ihsan E AlSaimary* and Falih Hmood Mezban

Department of Microbiology, University of Basrah, College of medicine, Basrah, Iraq

ABSTRACT

This study aimed to estimate specific IgE by poly check technique against various allergens. In the present study 56 environmental allergens (food, fungal, agricultural, and aeroallergens) were tested against specific IgE. This study found a very high significant allergen – specific IgE reactions with a high degrees mediated a various forms of hypersensitivity is sever in 4 and 5 stage of age groups to males asthma patients, in allergens except Cat Ep. While in females recorded severe hypersensitivity in 2, 3 and 4 stage of age groups, in allergens except cat. Ep., Plantain, hazel pollen. And Alder pollen.

*Corresponding author

Ihsan Edan AlSaimary, Department of Microbiology, University of Basrah, Collage of Medicine, Basrah, Iraq. Tel: 009647801410838, E-Mail: ihsanalsaimary@gmail.com

Received: January 22, 2021; **Accepted:** January 25, 2021; **Published:** January 31, 2021

Keywords: Poly Check, Human Bronchial Asthma, Allergens, Immunology

Introduction

Asthma is a complex respiratory disease in which genetic predisposition, environmental and immunological influences interfere with each other. It is considered one of the most prevalent chronic diseases, affecting approximately 300 million individuals and causing an estimated 250,000 deaths each year. In addition, it is projected that by 2025, the global asthma burden will rise by 100 million people due to a growing Westernized lifestyle and urbanization in developing countries. The ‘hygiene theory’ was originally attributed to an increase in the prevalence of allergic diseases, including asthma, indicating that decreased exposure to microbes during the first years of life plays a role in the development of allergic diseases. While this theory is generally accepted, studies have shown that the increased incidence of asthma, rhinitis, or Neurodermitis does not completely account for decreased microbial exposure [1-6]. Asthma is a widespread illness globally and affects individuals of all ages, This condition usually occurs in infancy and is characterized by variable symptoms of wheeze, dyspnea, and chest tightness caused by air flow obstruction (fully reversible) [7,8].

Food Allergy

An immunological reaction that occurs from food ingestion, inhalation or atopic touch. IgE antibodies or other immune cells, such as T cells, may mediate immunological reactions. Any staff specifically classify food allergies these immunological responses are mediated by immunoglobulin E (IgE) antibodies, whereas some use the wider concept of immunological response, which also includes mediated T-cell responses. Enzymes, enzyme inhibitors, structural proteins or binding proteins with diverse biological

functions can be allergenic proteins in foods [9-11]. Food allergy pathogenesis starts with a process of sensitization during which the body identifies one or more proteins as a foreign invader in a specific food source and begins to mount an immune-defensive response. Subsequent ingestion of the offending food may result in an allergic reaction that may occur in either of two ways, i.e., immediate or delayed response.

Drug Allergy

One form of unpredictable ADR involves a variety of hypersensitivity reactions mediated by immunology with various pathways and clinical presentations [12]. It accounts for around 5-10% of all ADRs [13]. Another form of unpredictable ADR is pseudoallergic reactions (also known as non-allergic or non-immune-mediated reactions). These reactions are mostly indistinguishable from true allergic reactions mediated by immunology, yet lack immunological precision. Not only does drug allergy affect the quality of life of the patient, but it can also lead to delayed treatment, the use of suboptimal alternate drugs, needless inquiries, and even death. In addition, considering the various signs and clinical presentations associated with the disorder, the recognition of drug allergy is difficult. Therefore, if a drug-induced allergic reaction is suspected, it is advised to consult an allergist skilled in drug allergy detection, diagnosis and treatment. This article will include an overview of drug allergy mechanisms and risk factors, as well as well as diagnostic and effective treatment methods for some of the most prevalent medications.

Materials and Methods

Samples

A total of (312) patients (149 males and 163 females) of various age groups were included in this Case –control study. The patient

was examined, and diagnosed as asthma under supervision of the Physician. The study was carried out during a period from July 2018 to January 2020.

The Grouping of Patient

Male & Female patients were divided into five groups according to (Falk, 1993; Herd, et al., 1996; Nishioka, 1996; Charman & Williams, 2002)

Group 1: 1- 11 years

Group 2: 12 – 20 years

Group 3: 21- 30 years

Group 4: 31 – 40 years

Group 5: above 40 years

Control Group

A total of (204) healthy individual (81 males and 123 females) without any features of asthma or any allergies to be compared with asthmatic patient in genetic and immunological studies.

Statistical Analysis

Statistical analysis is done by using statistical package for social sciences (SPSS) software version 11, the chi square test, univariate and multivariate logistic regression analysis, the ANOVA analysis were applied for correlation between each study parameter, and the difference between two proportion by T- tests were used to assess the significance of difference between groups, P-Value less than 0.05 was considered as Statistically significance (S). P-value < 0.01 as highly significant (HS). and P-value > 0.001 as extremely significant (ES).

Polycheck Test

1- **Equipment:** Personal Computer, printer, flatbed scanner

2- **Biocheck Imaging Software (BIS):** For patient-oriented analysis, calculation and report.

3- **Lab Equipment:** Rocking shaker (30 rpm), adjustable pipettes for 200 up to 1000 µl; Multipipette (1ml) to dispense the wash solution

4- **Demineralized Water:** one-liter bottle for preparation of wash solution

Test Performance

A- To start the assay: all component was tested at room temperature and be mixed well.

B- Reagents lots provided with the actual kit was used only.

C- Powder wash buffer has to be diluted with demineralized water at least 30 minutes prior to use avoid foaming.

D- The membranes of the test cassettes shouldn't dry during the assay.

E- All incubation steps are performed at room temperature (18-24 c) and with constant shaking.

F- A flatbed scanner with CCD sensor and scanning resolution of 600 DPI was used for interpretation of the test result.

G- Performance was tested by automated system additional information sheets are available.

1- A sufficient number of polycheck allergy cassette was prepared and mark them-only on the long side of the cassette.

2- The cassettes was moisture with 1 ml wash buffers, by tapping upside-down on absorbent paper.

3- Overlay allergy cassettes with 250 micro letter of polycheck start solution (blue cap) and incubate for 60 seconds (always pipette into the gap). Tap the cassettes carefully upside-down on absorbent paper.

4- A 200 micro letters of the respective patients serum was add into the cassette and incubate for 60 minutes on a shaker place

the MTP-holder on the middle of shaker.

5- A 3 times was decanted and washed with 1ml of polycheck wash buffer. Tap the cassettes carefully upside-down on absorbent paper.

6- A 250 micro letters was add wash buffer and incubate for 5 minutes on a shaker.

7- Repeat step 5. Decant and tap the cassettes carefully.

8- A 250 micro letter of polycheck anti-IgE antibody was pipetted and incubated for 45 minutes on a shaker. Decant and wash 3 times with 1 ml wash buffer. Tap the cassettes carefully on absorbent paper.

9- A 250 micro letters polycheck enzyme -labeled anti-ligand was add and incubated for 20 minutes on shaker. decant and wash as described in 7. Tap the cassettes carefully on absorbent paper.

10- A 250 micro letter of polycheck substrate solution was add. And incubated for 20 minutes in the dark. decant and wash as described in 7.

11- Air dry the membrane and evaluate the polycheck allergy cassettes using scanner and the

BioCheck imaging software.

Table 1: Specific IgE Standard (Polycheck)

Class	Conc. IgE(KU/I)	Explantation
0	<0.35	No specific antibody detection
1	0.35 - <0.7	Very weak antibody conc.
2	0.7 - <3.5	Weak antibody conc.
3	3.5 - < 17.5	Clear antibody conc.
4	17.5 - < 50	Strong antibody conc.
5	50 - < 100	Very strong antibody conc.
6	>= 100	Extremely high antibody conc.

KU/I kilo Unit Per Letter

Specific IgE (Poly Check Technique)

To study specific IgE concentration against (56) studied allergens, it is important to clear that these allergens (in number and specification) were studied at first time in the similar immunological studies for asthmatic patient. Illustrate in Fig. 3-7 to Fig. 3-118 also the following standard concentration used to classify the type of allergy for each patients as mentioned in Chapter 2 material and methods

Table 2: Poly Check Standard Concentration

Class	IgE concentration	Explain
0	<0.35 KU/I	No Ab
1	0.35- < 0.7 KU/I	Very week
2	0.7 - < 3.5 KU/I	Week Ab
3	3.5 - < 17.5 KU/I	Clear Ab
4	17.5 - < 50 KU/I	Strong Ab
5	50 - < 100 KU/I	Very strong Ab
6	KU/I 100 ≤	Extremely high Ab

Results

Figures: (1-55) illustrated the types of sensitivity of Asthma Male patients according to allergens- specific IgE reaction measured by poly check technique. From 62 environmental (food, fungal, agricultural, chemical and aero-allergens), it has been recognized that allergens which induced highest degree of reactions (highest type of hypersensitivity)

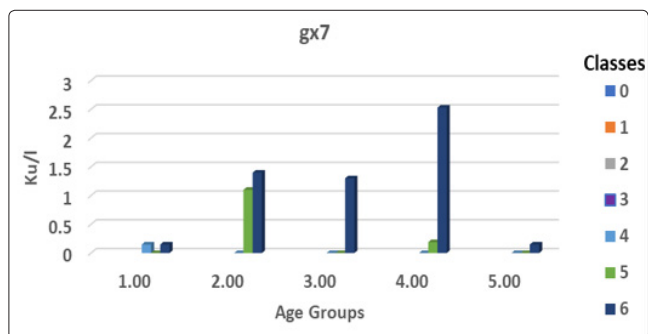


Figure 1: 6grass mix

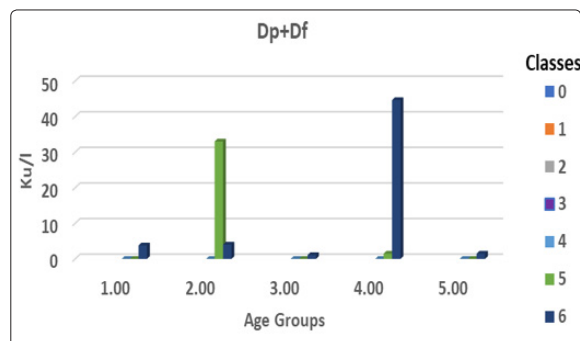


Figure 5: D. pteronyssinus+farinae

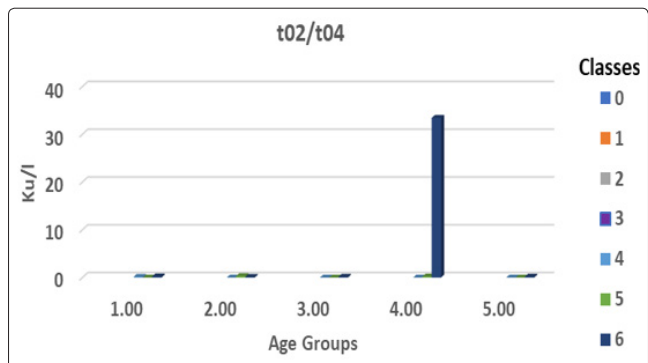


Figure 2: Alder/Hazel pollen

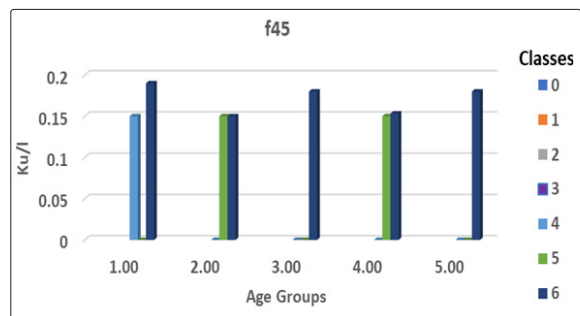


Figure 6: Bakers yeast

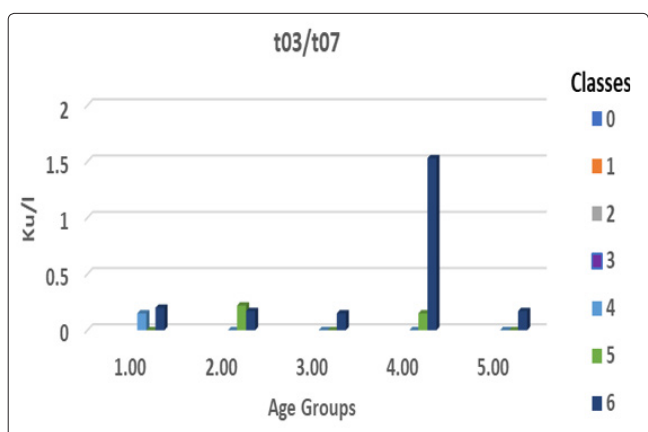


Figure 3: Birch/white Oak pollen

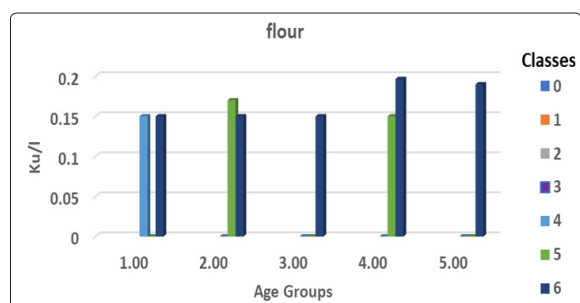


Figure 7: Wheat flour

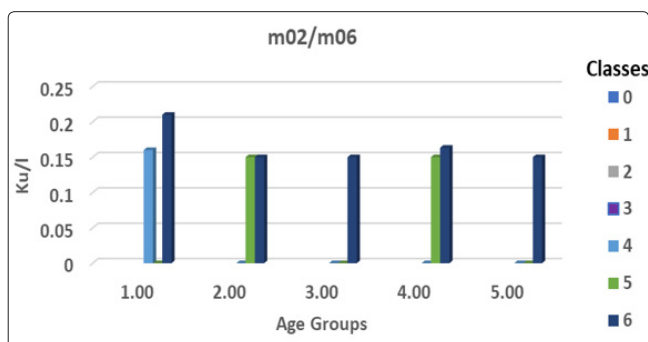


Figure 4: Cladosporium herb. /Alternaria alternata

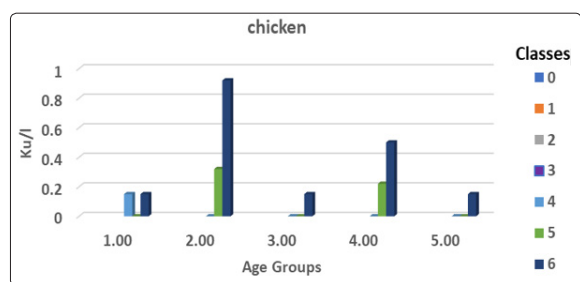


Figure 8: Chicken

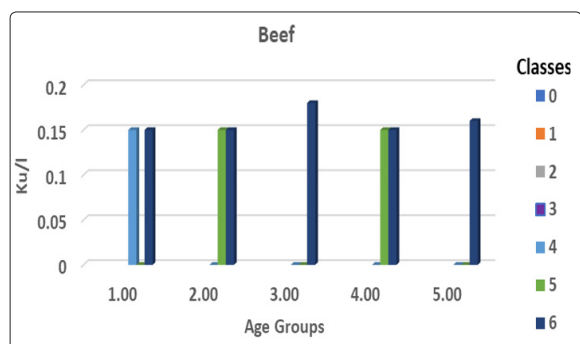


Figure 9: Beef meat

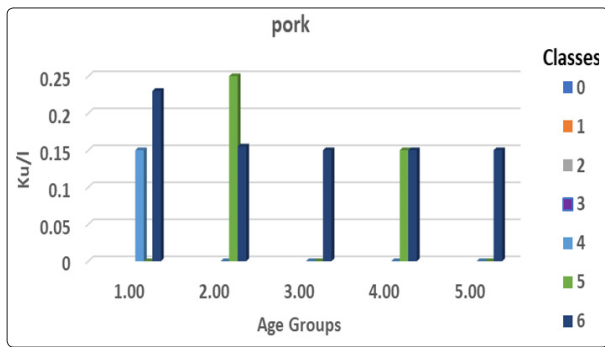


Figure 10: Pork meat

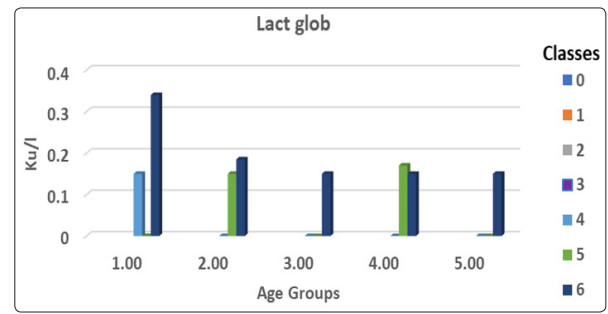


Figure 15: Bov. Alb

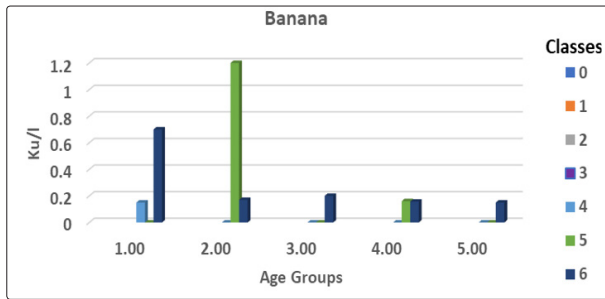


Figure 11: Banana

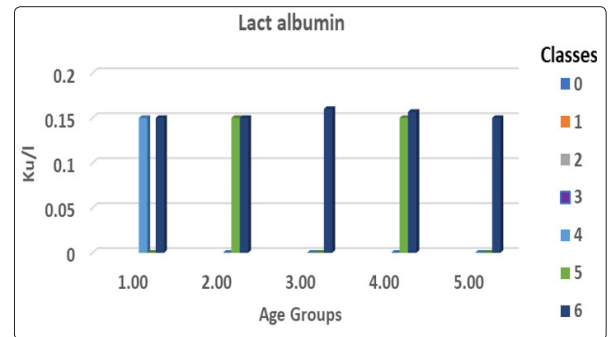


Figure 16: Lacto globulin

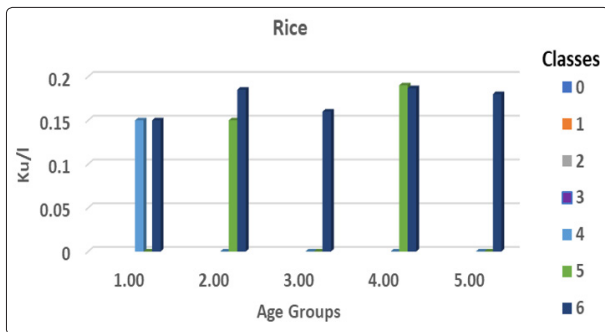


Figure 12: Rice

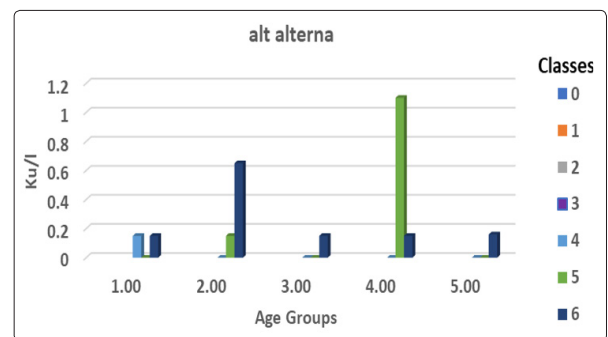


Figure 17: Lacto alb

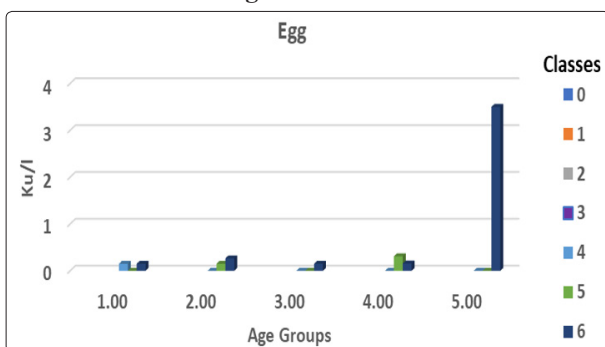


Figure 13: Egg White+yolk

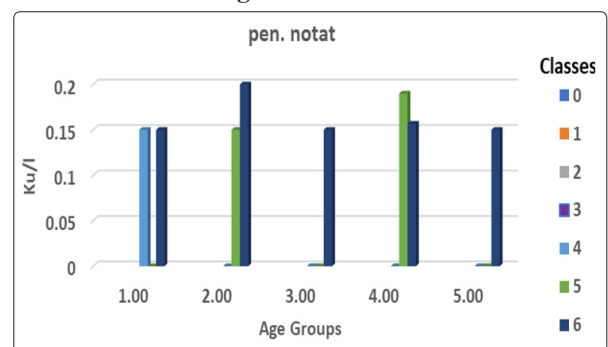


Figure 18: Alternaria alternata

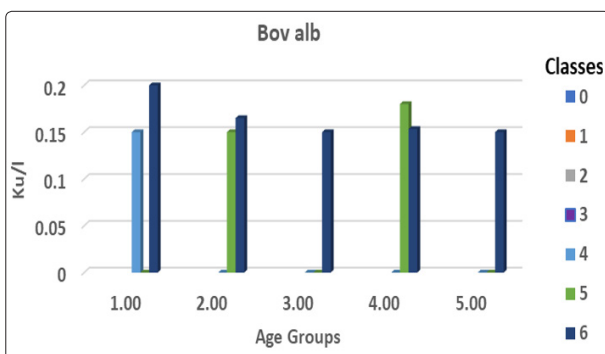


Figure 14: Bov alb

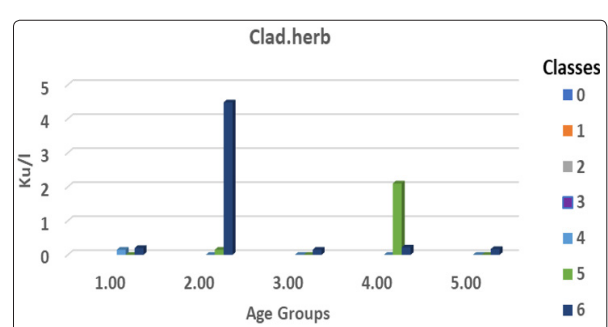


Figure 19: Pen. Notatum

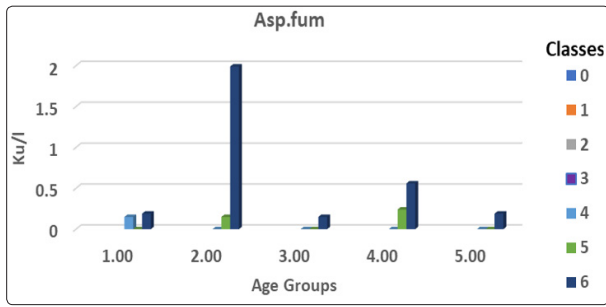


Figure 20: Clado.herb

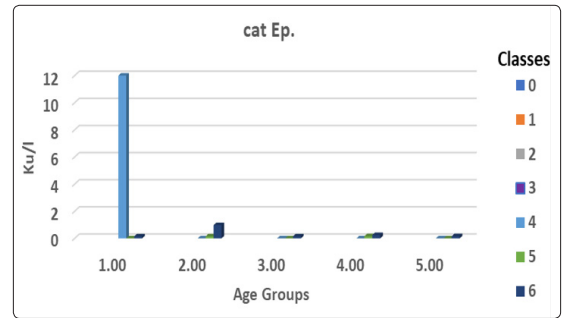


Figure 25: Horse Ep.

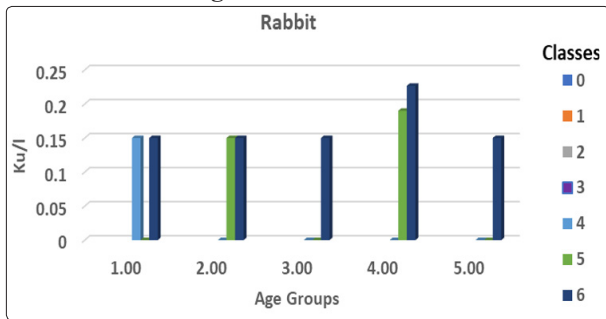


Figure 21: Asp. fumigatus

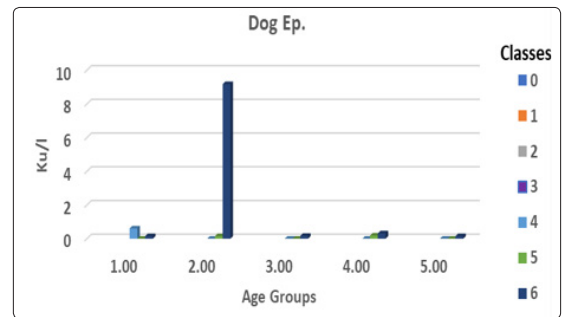


Figure 26: Cat. Ep.

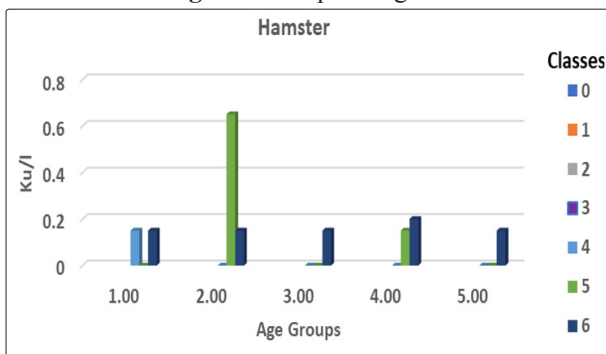


Figure 22: Rabbit

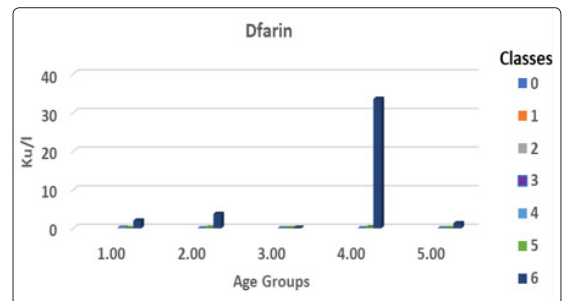


Figure 27: Dog.Ep.

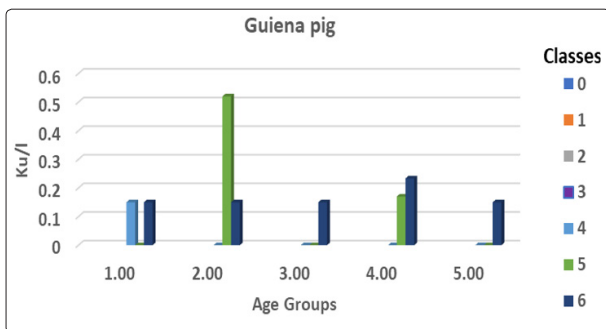


Figure 23: Hamster

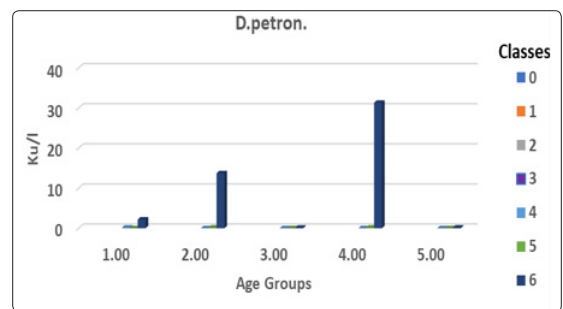


Figure 28: Dermatophagoides farine

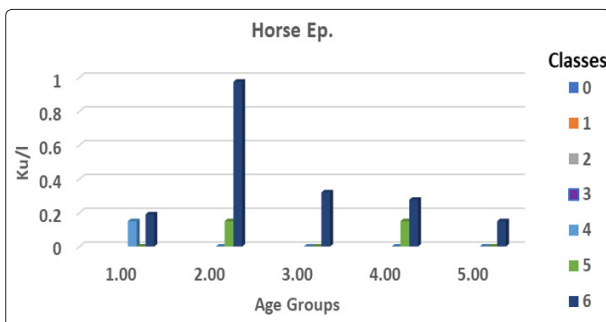


Figure 24: Guinea pig

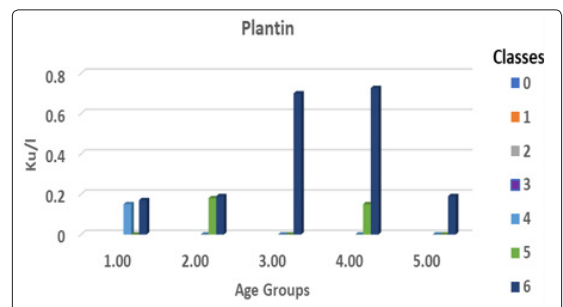


Figure 29: Dermatophagoides pteronyssinus

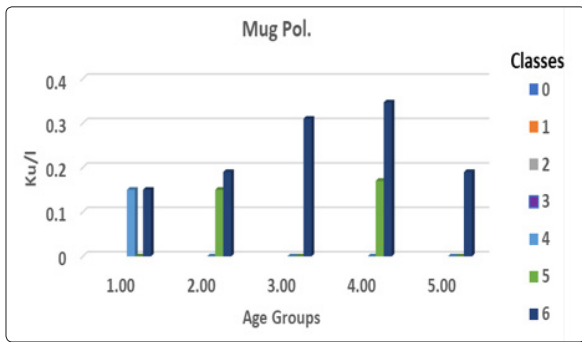


Figure 30: Plantin

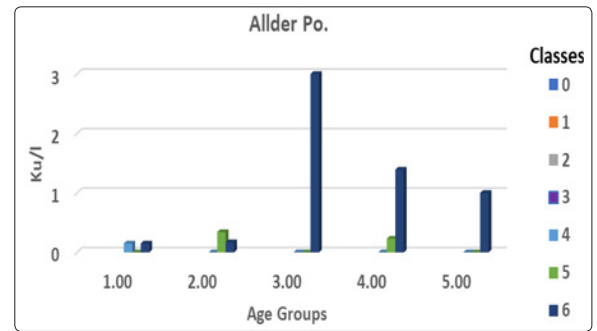


Figure 35: Hazel pol.

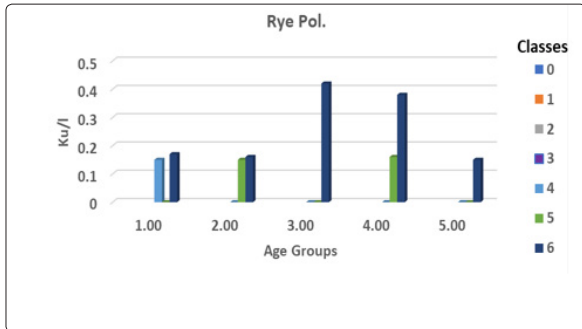


Figure 31: Mug.pol

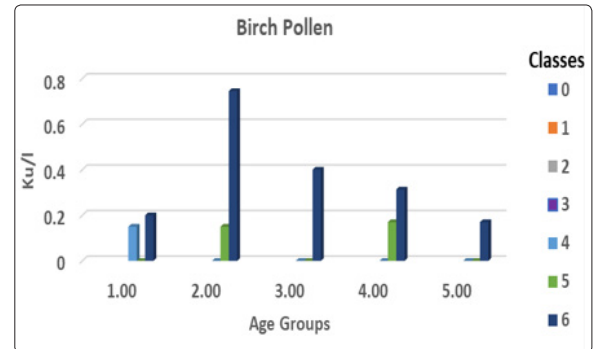


Figure 36: Alder pol.

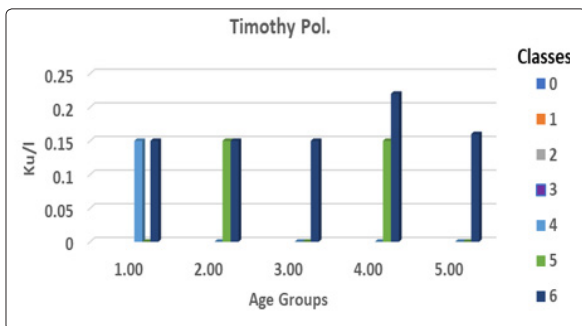


Figure 32: Rye pol.

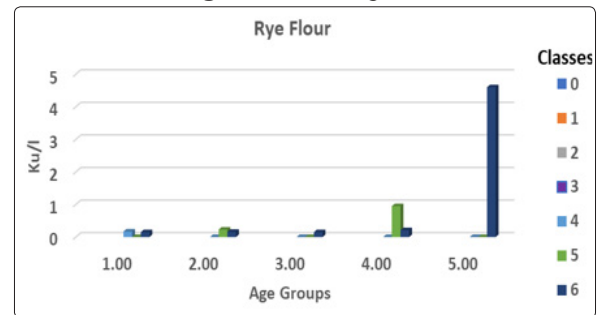


Figure 37: Birch pol.

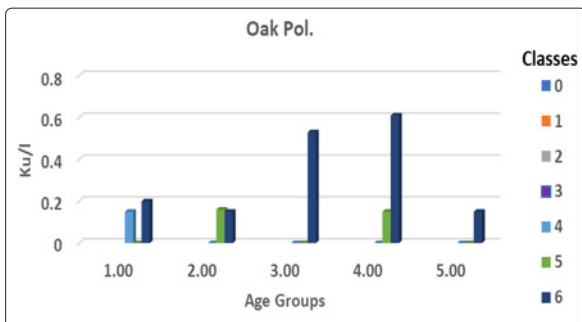


Figure 33: Timothy pol

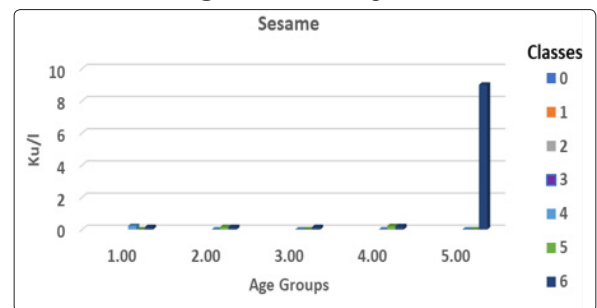


Figure 38: Rye flour

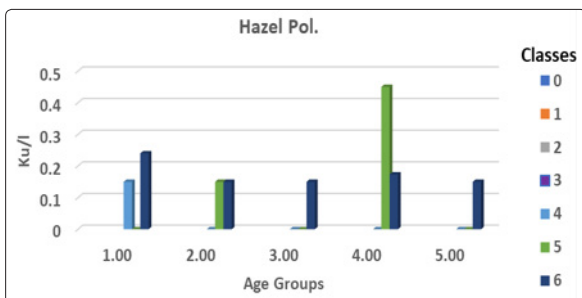


Figure 34: Oak pollen

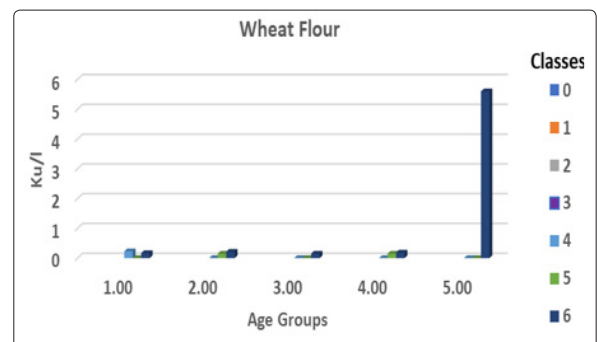


Figure 39: Sesame

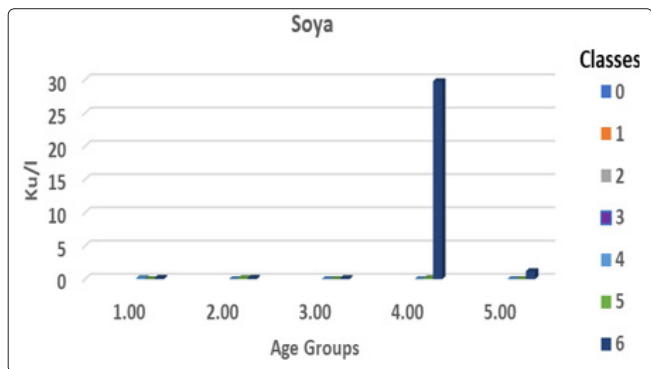


Figure 40: Wheat flour

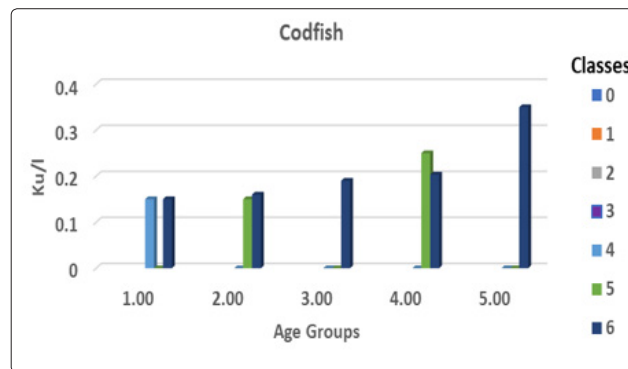


Figure 44: Shrimp

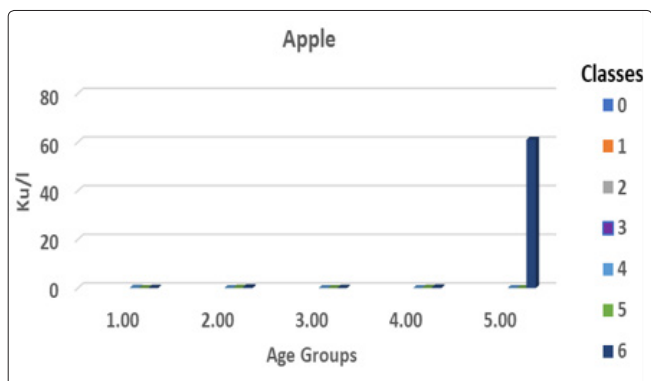


Figure 41: Soya

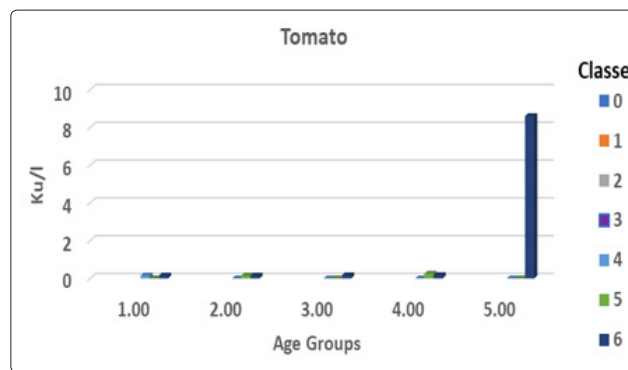


Figure 45: Codfish

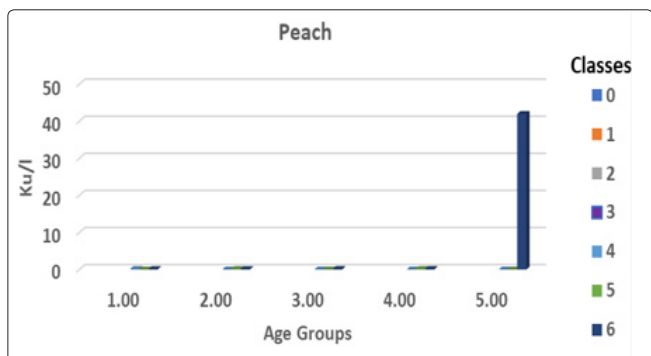


Figure 42: Apple

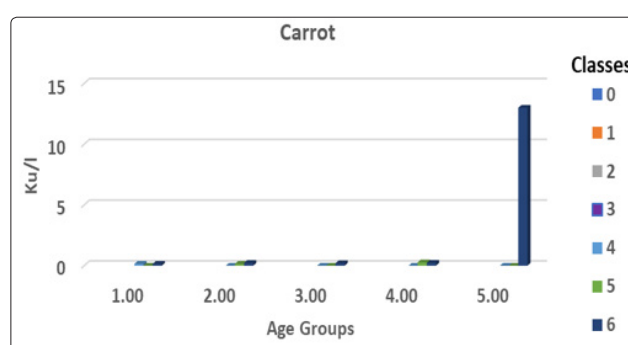


Figure 46: Tomato

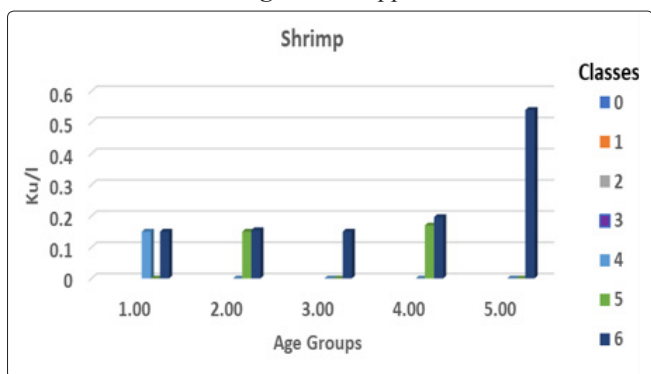


Figure 43: Peach

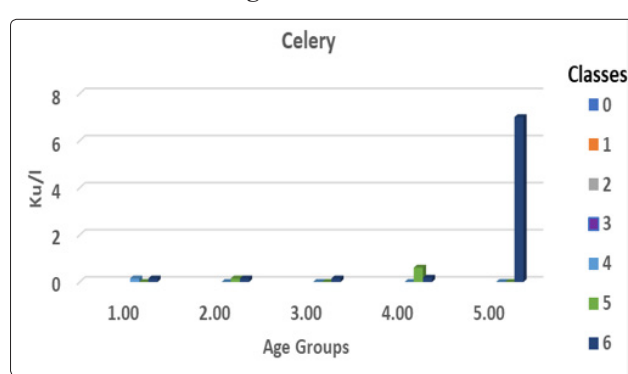


Figure 47: Carrot

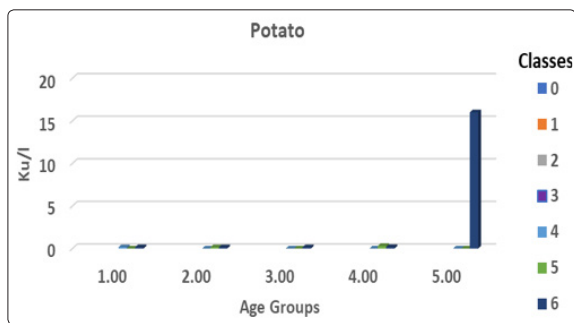


Figure 48: Celery

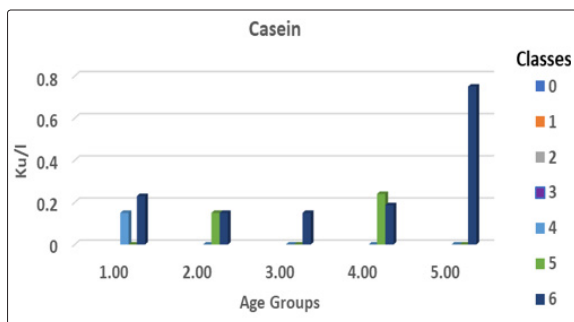


Figure 49: Potato

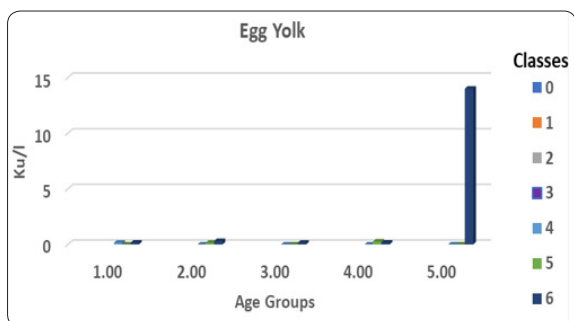


Figure 50: Casein

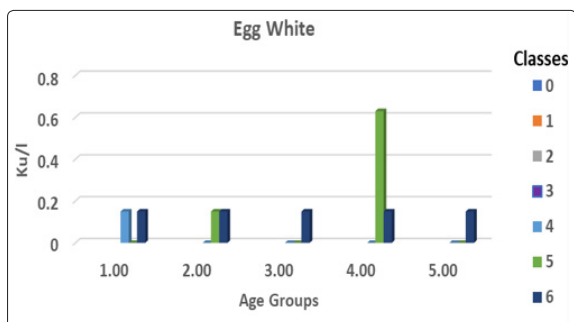


Figure 51: Egg yolk

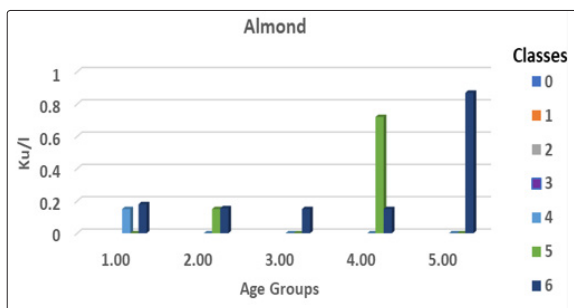


Figure 52: Egg white

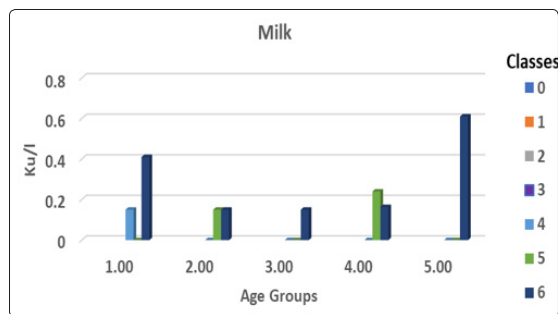


Figure 53: Almond

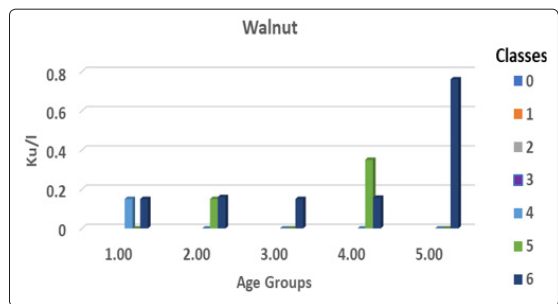


Figure 54: Milk

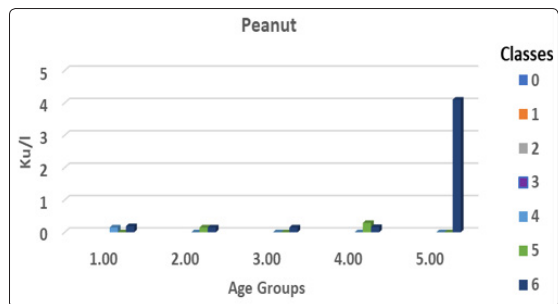


Figure 55: Walnut

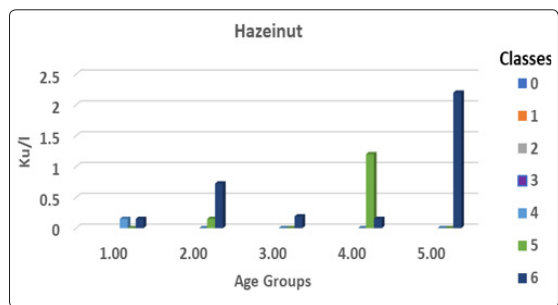


Figure 56: Peanut

Figures (57-112) illustrated the types of sensitivity of Asthma Female patients according to allergens- specific IgE reaction measured by polycheck technique. From 56 environmental (food, fungal, agricultural, chemical and aero-allergens), it has been recognized that allergens which

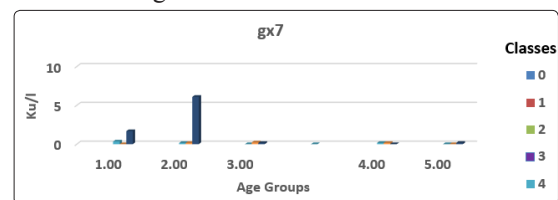


Figure 57: 6grass mix

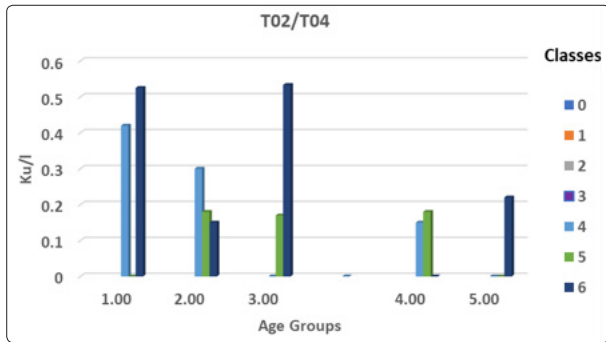


Figure 58: Alder/Hazel pollen

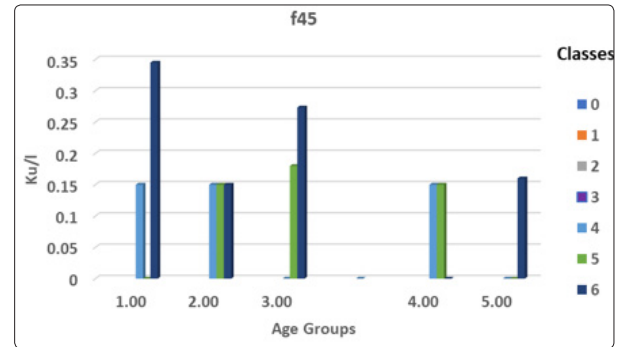


Figure 62: Bakers yeast

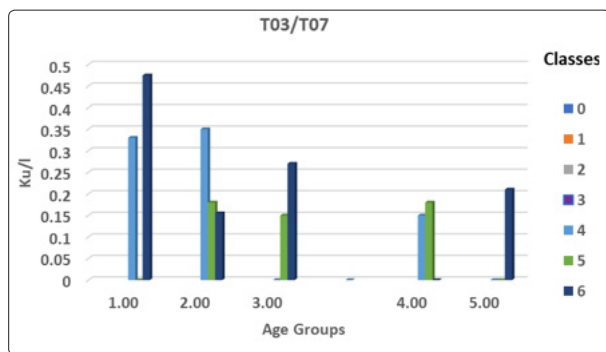


Figure 59: Birch/white Oak pollen

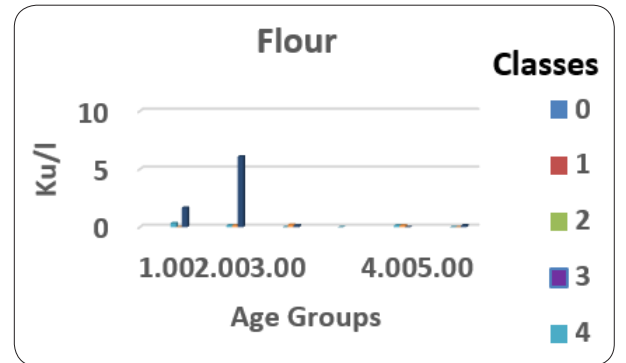


Figure 63: Wheat flour

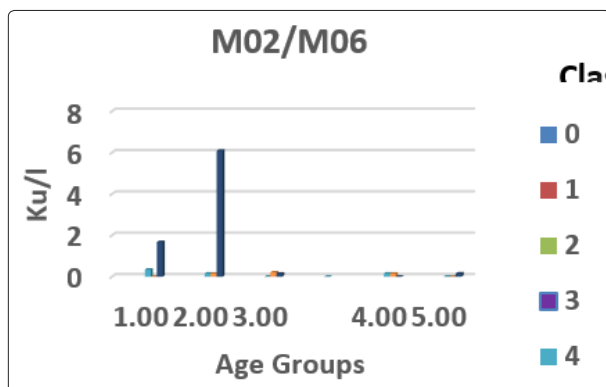


Figure 60: D.pteronyssinus+farinae

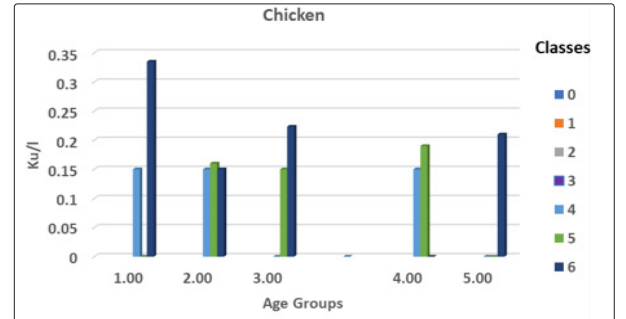


Figure 64: Chicken

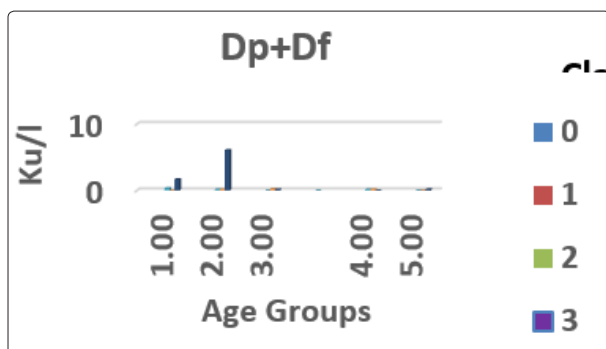


Figure 61: D.pteronyssinus+farina

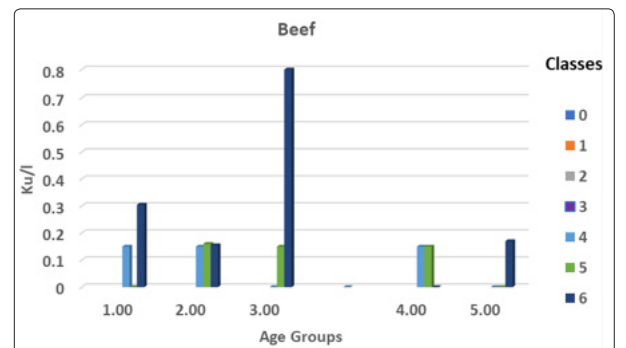


Figure 65: Beef meat

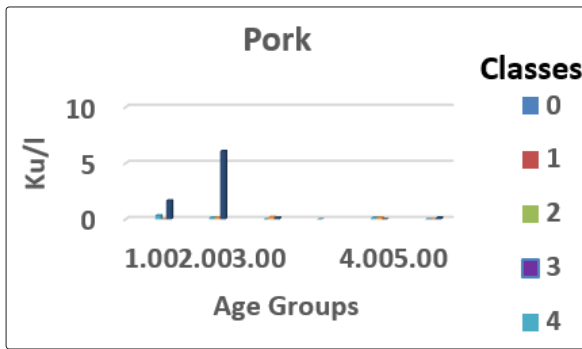


Figure 66: Pork meat

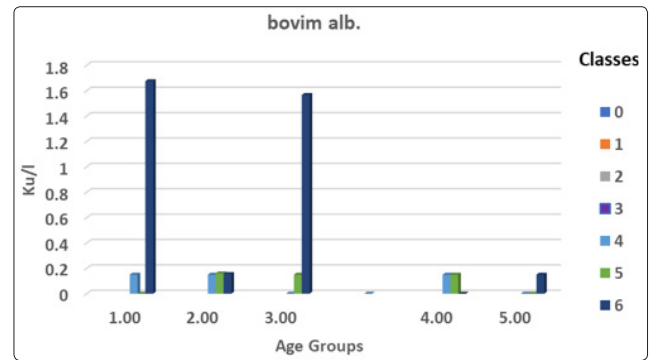


Figure 70: Bovim alb.

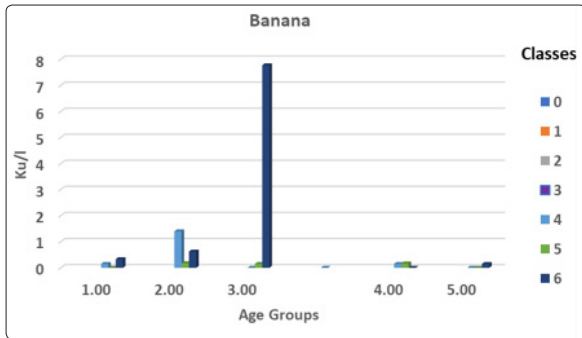


Figure 67: Banana

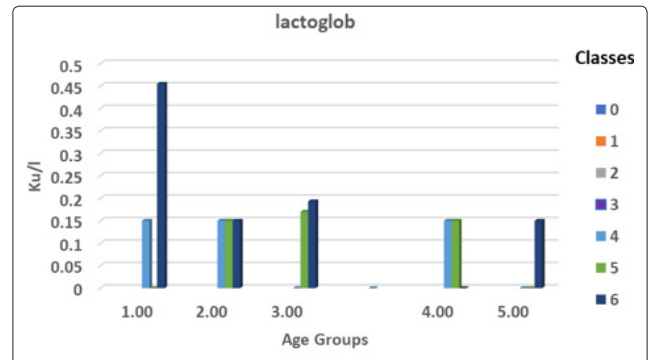


Figure 71: Lacto glob.

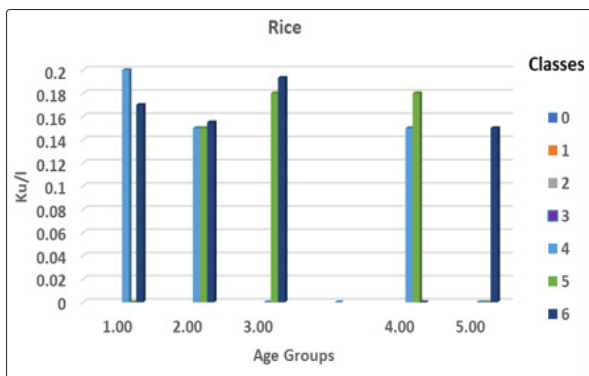


Figure 68: Rice

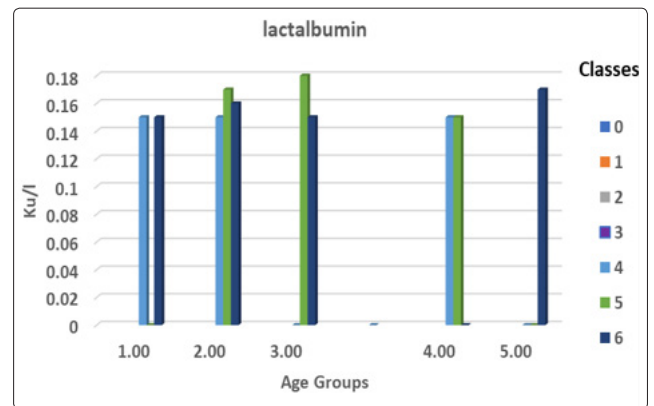


Figure 72: Lacto alb.

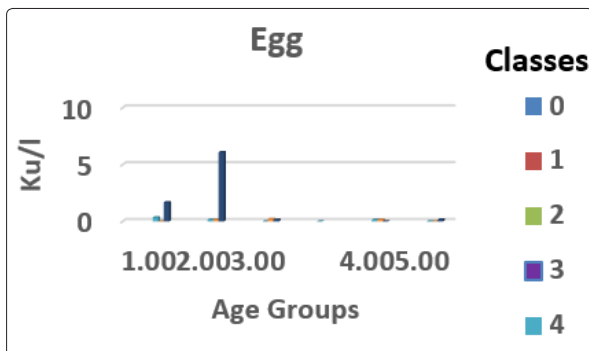


Figure 69: Egg White +yolk

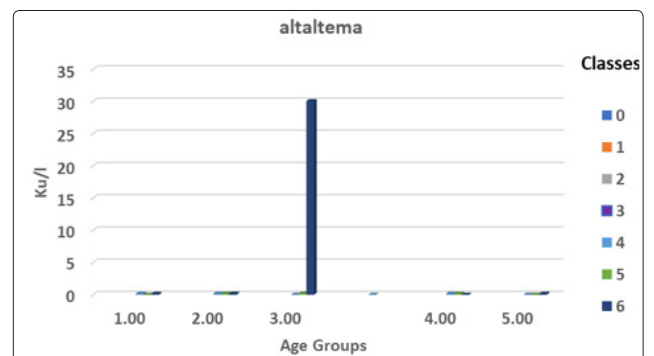


Figure 73: Alternaria alternate

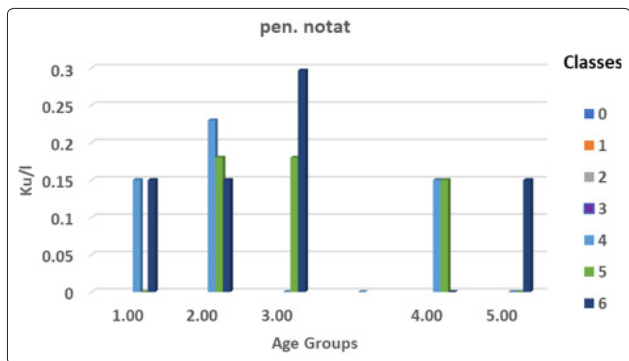


Figure 74: Pen. notatum

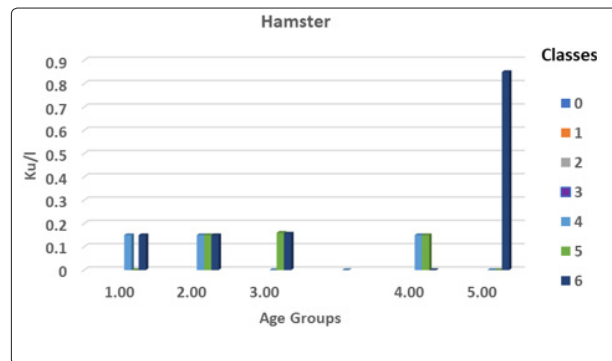


Figure 78: Hamster

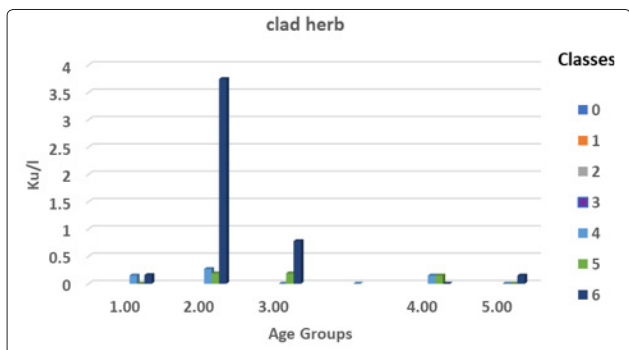


Figure 75: Clado. herb.

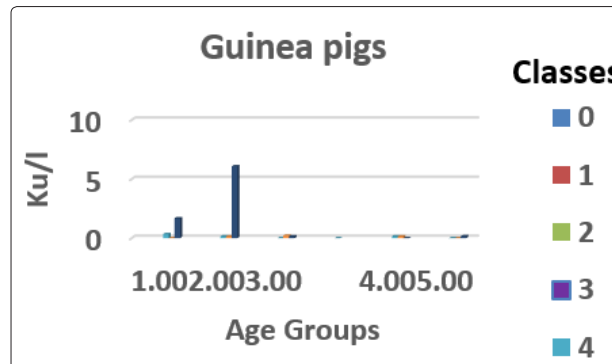


Figure 79: Guinea pigs

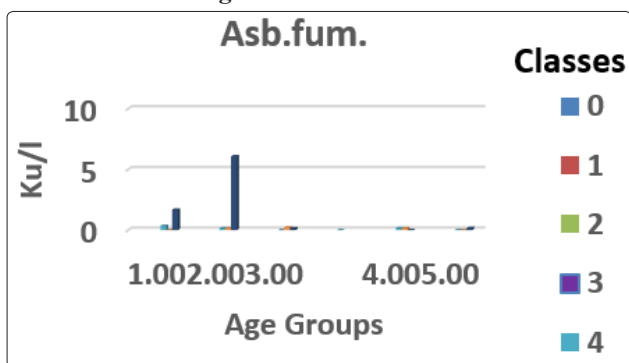


Figure 76: Asp. Fum.

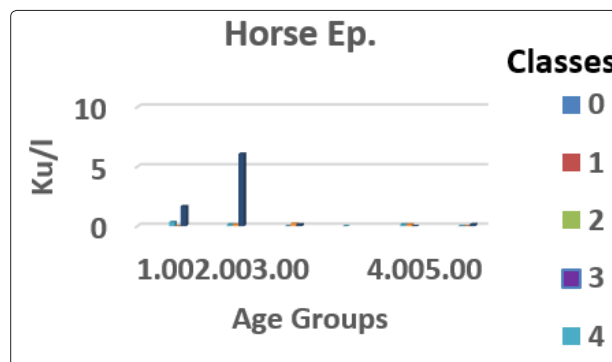


Figure 80: Horse Ep.

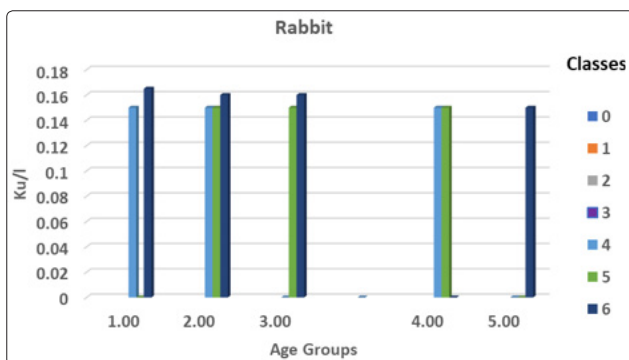


Figure 77: Rabbit

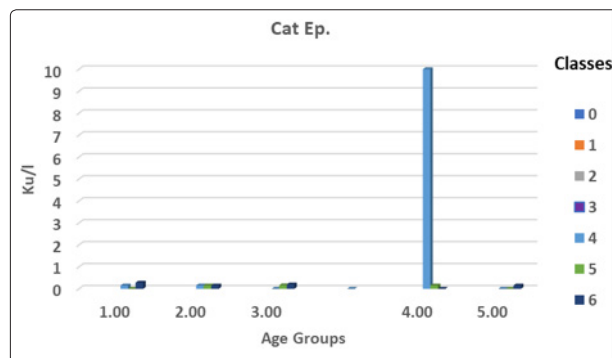


Figure 81: Cat Ep.

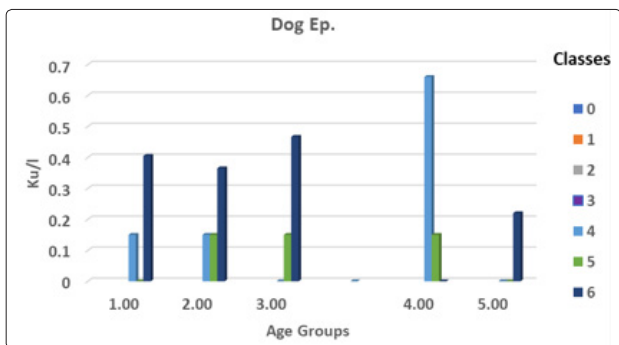


Figure 82: Dog Ep.

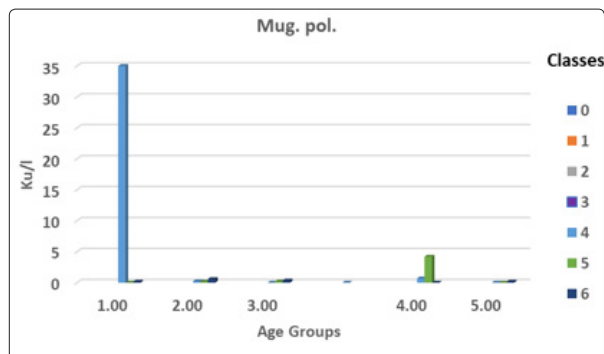


Figure 86: Mug. Pol.

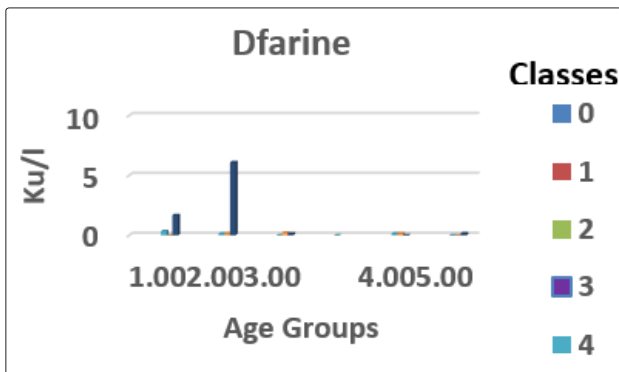


Figure 83: D. farine

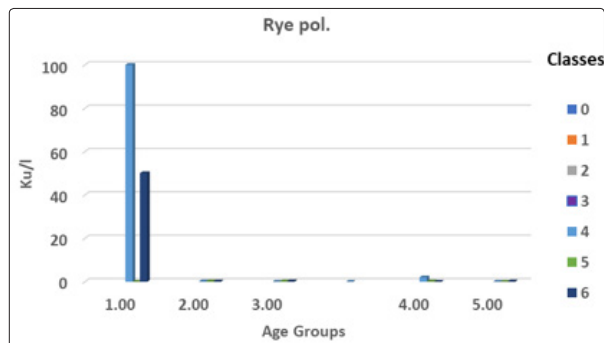


Figure 87: Rye pol.

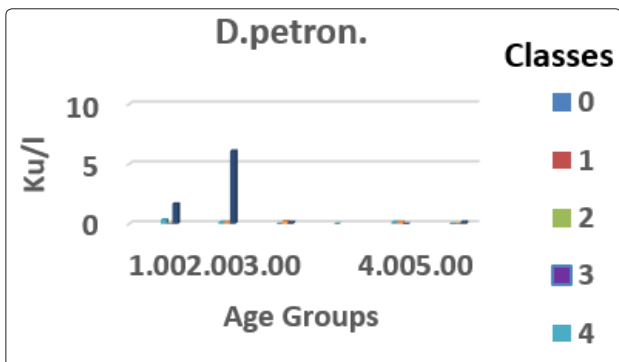


Figure 84: D.petron

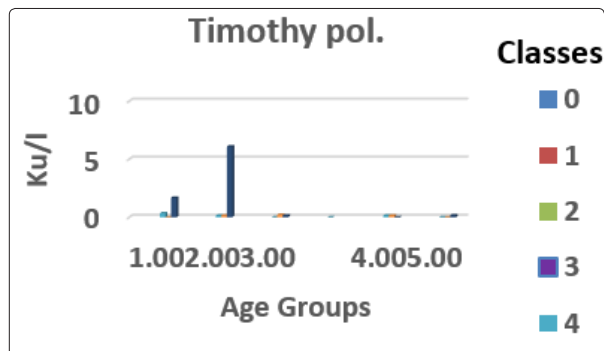


Figure 88: Timothy pol.

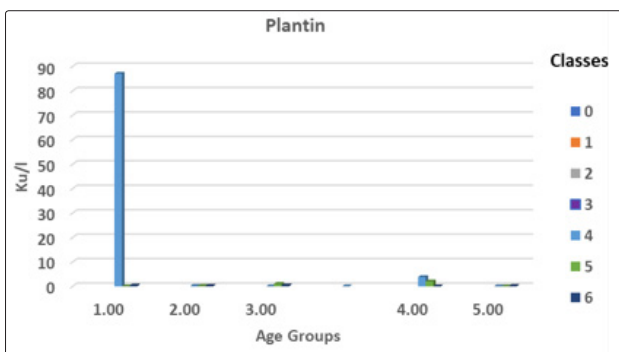


Figure 85: Plantin

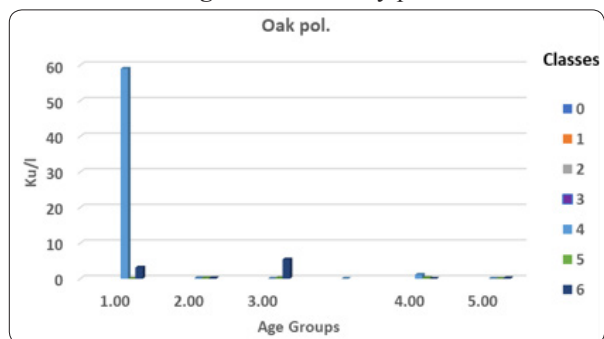


Figure 89: Oak pol.

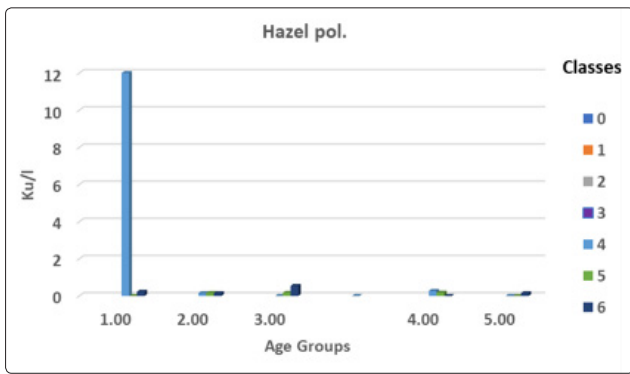


Figure 90: Hazel pol.

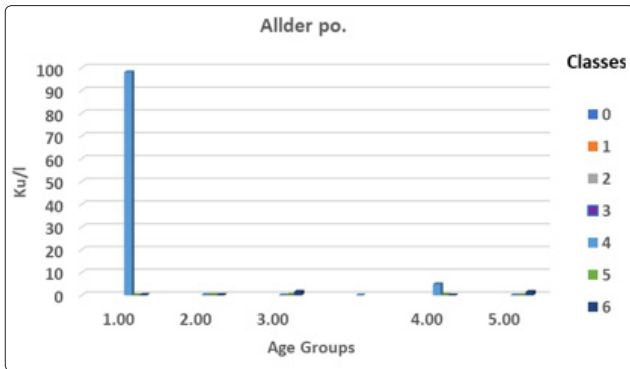


Figure 91: Alder pol.

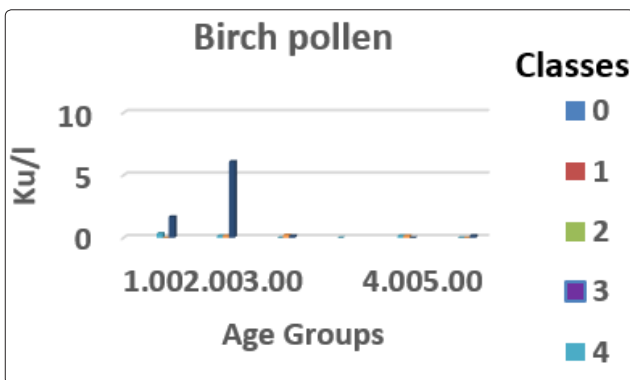


Figure 92: Birch pol.

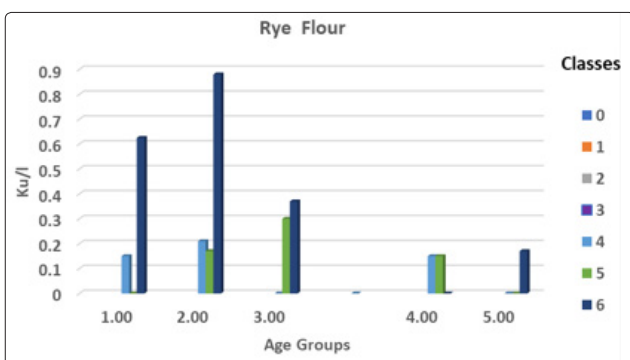


Figure 93: Rye flour

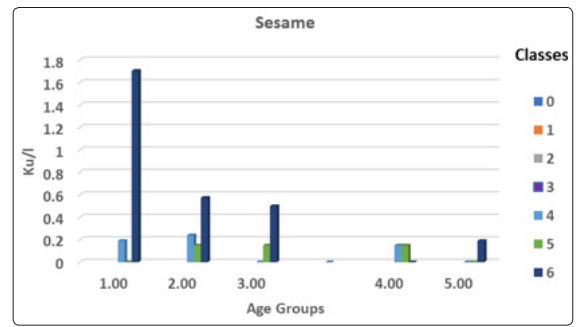


Figure 94: Sesame

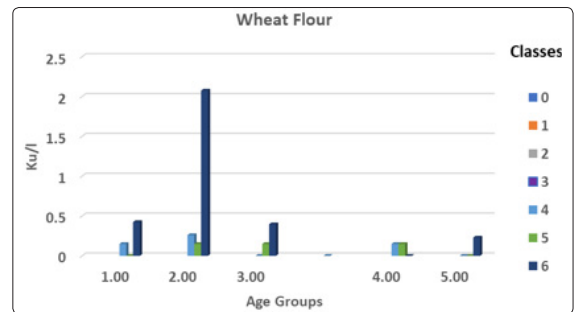


Figure 95: Wheat flour

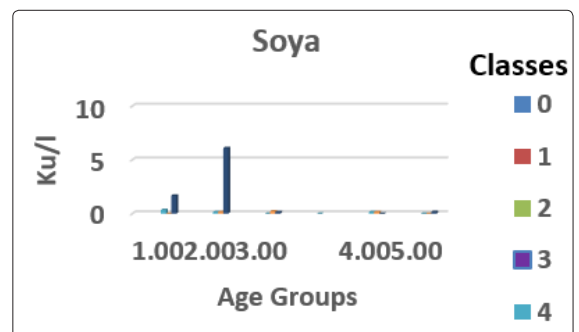


Figure 96: Soya

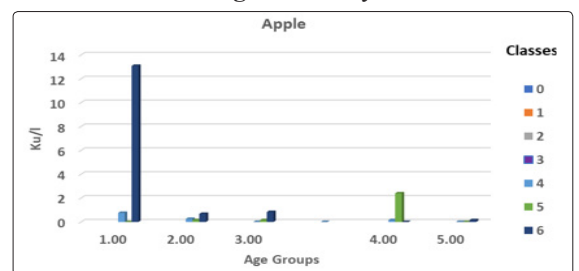


Figure 97: Apple

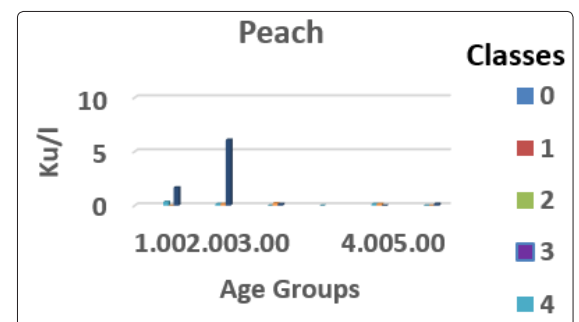


Figure 98: Peach

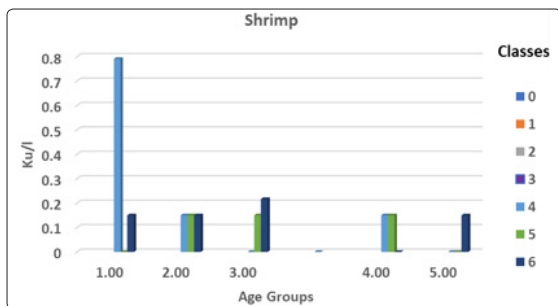


Figure 99: Shrimp

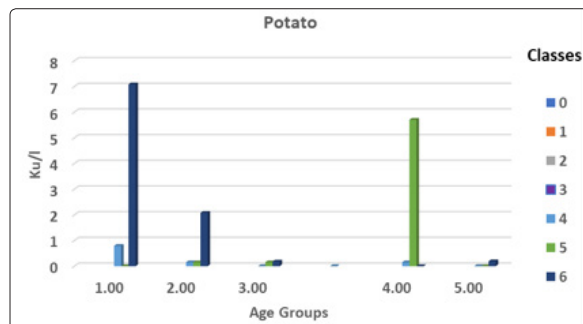


Figure 104: Potato

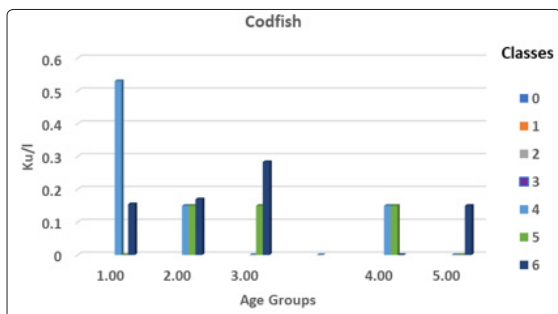


Figure 100: Codfish

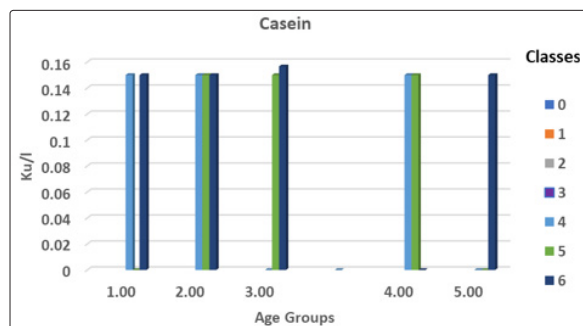


Figure 105: Casein

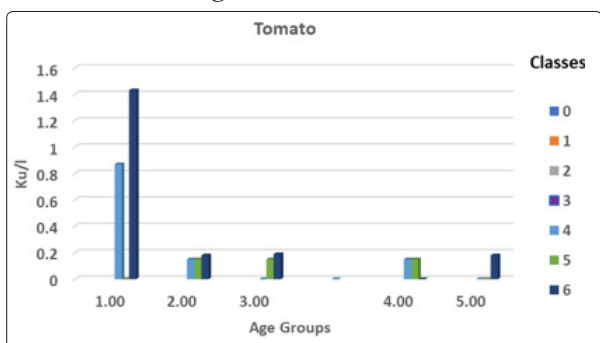


Figure 101: Tomato

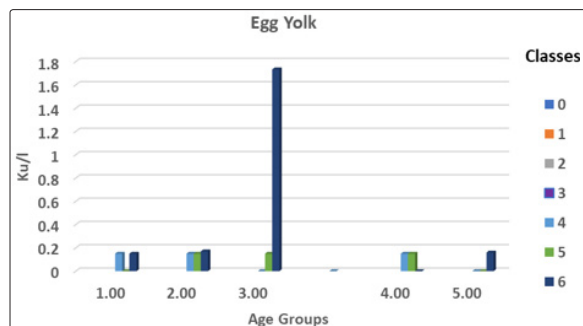


Figure 106: Egg yolk

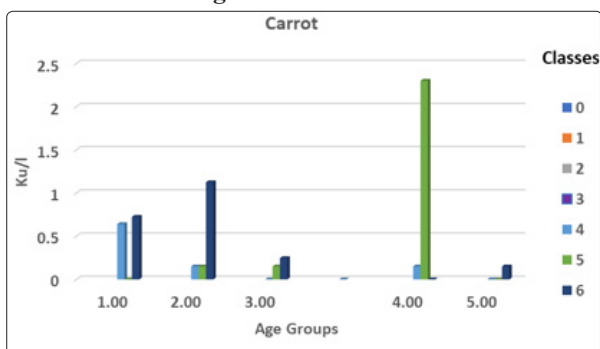


Figure 102: Carrot

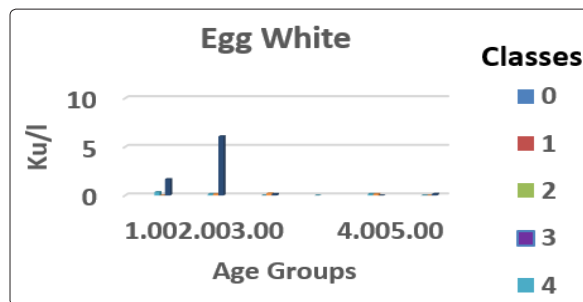


Figure 107: Egg white

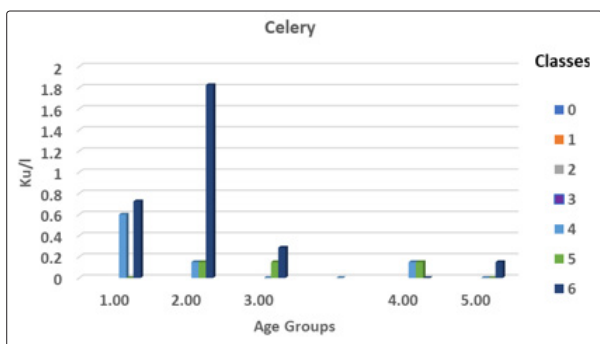


Figure 103: Celery

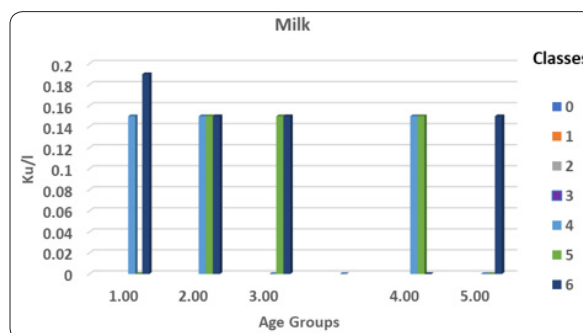


Figure 108: Milk

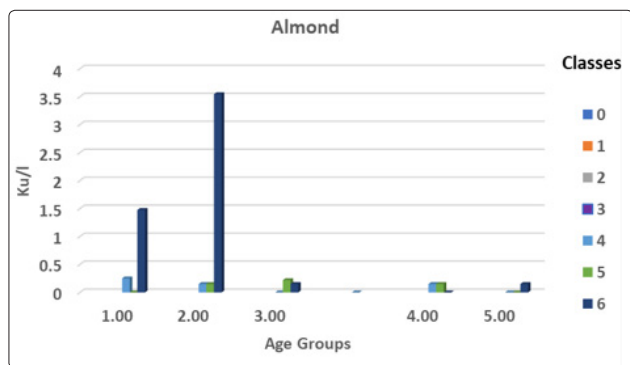


Figure 109: Almond

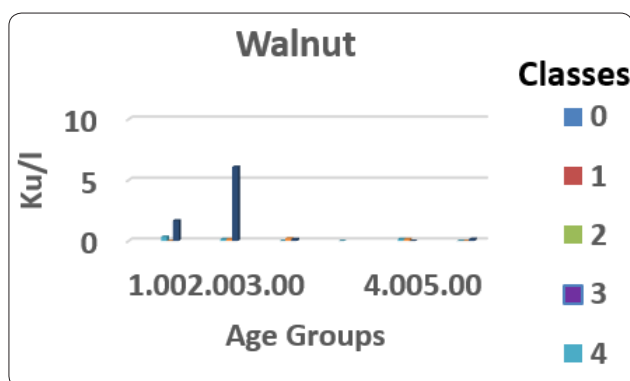


Figure 110: Walnut

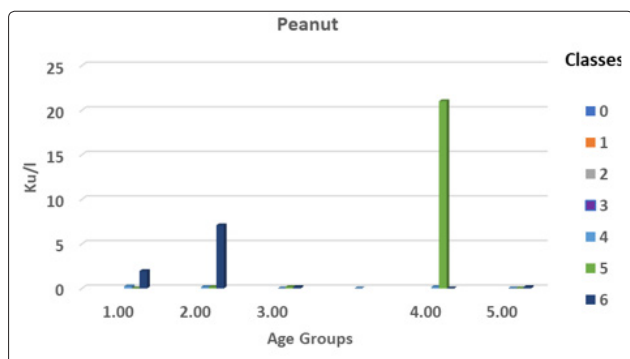


Figure 111: Peanut

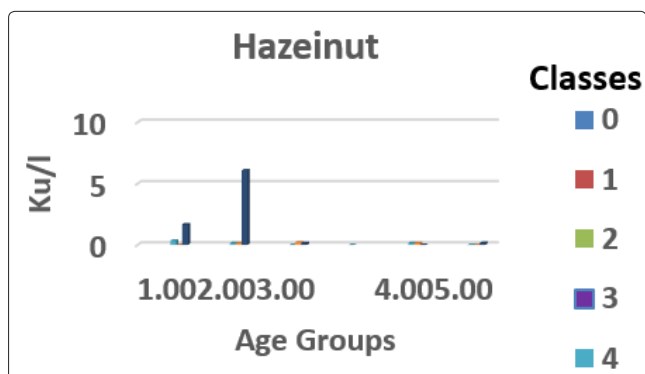


Figure 112: Hazeinut

Discussion

56 environmental allergens (food, fungal, agricultural, and aeroallergens) have been checked against particular IgE in the present research. This study found a very highly important allergen-specific high-grade IgE reactions induced by a number of forms of hypersensitivity in male asthma patients in 3 and 4

age groups in allergens except Cat Ep. While in females recorded severe hypersensitivity in 2,3 and 4 stage of age groups, in allergens except cat. Ep., Plantain, hazel pol. And Alder pol. Our result interested in allergen – specific IgE reactions which were absolutely compatible and agreed with the results of previous studies that have been carried out about atopic disease in respect of bronchial asthma as follows: Allergies to food can lead to life-threatening reactions and decrease the quality of life. Most reactions are triggered by a minority of these foods, and popular food allergens differ across geographic regions. [14] Serum IgE levels are elevated in high percent of AD children, and positive skin tests and RASTS to many allergens to diet and environment exist in high percentage of children with AD Suratannon. Food allergic reactions cause increased skin symptoms in about (33-40%) children with moderate to severe disease [15-18]. Reported that out of 74 Swiss children have atopic dermatitis, 34% of them had hypersensitivity. Patient might have both Food allergy and asthma, nearly in one-third of children with food allergy having asthma. This leads to risk of having a fatal reaction from food allergen exposure. For this reason patients should be carefully instructed on allergen. [14]. Many types of food allergens have been studied that were found to cause or related with atopic dermatitis in various ages such as:

1. Proteins (David, et al., 1984 ; Spergel, et al., 1998, and Schade, et al., 2000) . Peanut (Lester, M. R. (2014).
 2. Soybean (James JM, Crespo JF 2007, Komata T et al. 2009).
 3. Shellfish (Stephen H et al. 2009 and Niggemann et al. 2000).
 4. Wheat (Mansueto P et al. 2015, Komata T et al. 2009).
 5. Milk (Waser M et al. 2007 and Schade 2000).
 6. Egg (Vazquez-Ortiz et al. 2014 and Li et al. 2001).
- And others (Peanut, Soy, Vegetables, tree nut, Seafood, and others) (Niggemann, et al., 2000 ; Worm, et al., 2000 and Grunther & Sampson, 2002).

Changes in the weather lead to allergen production, which have impact on severity of allergic reactions (Nielsen et al., 2002; Singer et al., 2005).

Recent studies suggested that the quantity of specific IgE for many allergens measured by serum assays of patients with atopic dermatitis. IgE to dust mite allergens in patients with AD were in general at least 20- fold higher than in sera from patients with asthma. Some of these results were found in our study that evidenced the strongly relation between various aeroallergens and the concentration of specific IgE. Modern studies linked type one and type four hypersensitivity mechanisms, which proposed a role of Langerhans cells. T lymphocytes could be involved in induction of the eczematous response and also production of IL-4. [18,19]. The role in activation of B cell to produce IgE, IL-4 may be involved in increases the expression of FcεRI to amplify the response to aeroallergens. Strong IgE association with inhalant allergens are relevant to the pathogenesis to atopic dermatitis. [20,21] . Candida albicans, Cladospirm, Aspergillus, Pencillium and other air borne molds, have many antigenic components like proteins and polysaccharides. They induce Th-1, Th-2 dependent immune responses if they break through the skin. The patients with asthma show a shifting from Th1 and Th2 dominance of the immune response to the allergen stimulate Th1 causing contact sensitivity. Fungal allergy in asthma patients are aggravating factor.

References

1. AIDhaheri, Hussein N, Ihsan E AlSaimary, Murtadha M ALMusafer (2020) Prevalence, Incidence Estimation, Risk Factors Of Prostatitis In Southern Iraq: Case-Control

- Observational Study. *European Journal of Pharmaceutical and Medical Research* 7: 47-55.
- AL Musafer, Murtadha M, Hussein N, AlDhaheri, Ihsan Edan A AlSaimary (2020) Clinical study of patients with prostatitis in Basrah and Missan governments: a case –control study . *Journal of Medical Research and Health Sciences* 3: 1110-1115.
 - AlDhaheri Hussein N, Ihsan E AlSaimary, Murtadha M AlMusafer (2020) Estimation of prostate specific antigen (PSA) concentrations in patients with prostatitis by fully automated ELISA technique. *Journal of Medical Research and Health Sciences* 3: 1100-1103.
 - AlDhaheri Hussein N, Ihsan E A Alsaimary, Murtadha M AlMusafer (2020) Flow Cytometric detection of Toll Like receptors on blood cells among patients with prostatitis. *Journal of Medical Research and Health Sciences* 3: 1116-1121.
 - Hellings PW, Kasran A, Liu Z, Vandekerckhove P, Wuyts A, et all. (2003) Interleukin-17 orchestrates the granulocyte influx into airways after allergen inhalation in a mouse model of allergic asthma. *Am J Respir Cell Mol Biol* 28: 42-50.
 - Hess D (2008) Aerosol delivery devices in the treatment of asthma. *Resp care J* 53: 699-725.
 - Hesselmar B, Aberg N, Aberg B, Eriksson B, Bjorksten B (1999) Does early exposure to cat or dog protect against later allergy development? *Clin Exp Allergy* 29: 611-617.
 - Hjern A, Haglund B, Hedlin G (2000) Ethnicity, childhood environment and atopic disorder. *Clin Exp Allergy* 30: 521-528.
 - Holgate ST (2009) Novel targets of therapy in asthma. *Curr Opin Pulm Med* 15: 63-71.
 - Hollander A, Heederik D, Doekes G (1997) Respiratory allergy to rats: exposure-response relationships in laboratory animal workers. *Am J Res Crit Care Med* 155: 562-567.
 - Hong S, Son DK, Lim WR, Kim SH, Kim H, et all. (2012) The prevalence of atopic dermatitis, asthma, and allergic rhinitis and the comorbidity of allergic diseases in children. *Environmental Health and Toxicology* 27.
 - Hong SJ, Lee YC (2007) PTEN down-regulates IL-17 expression in a murine model of toluene diisocyanate-induced airway disease. *J Immunol* 179: 6820-6829.
 - Hoppin JA, Umbach DM, London SJ, Alavanja MCR, Sandler DP (2003) Animal production and wheeze in the Agricultural Health Study: interactions with atopy, asthma, and smoking. *Occupational and environmental medicine* 60: 3.
 - Horak FJ, Studnicka M, Gartner C, Veiter A, Tauber E, Urbanek R (2002) Parental farming protects children against atopy: longitudinal evidence involving skin prick tests. *Clin Exp Allergy* 32: 1155-1159.
 - Hossny EM, Hasan ZE, Allam MF, Mahmoud ES (2009) Analysis of the filed data of a sample of Egyptian children with bronchial asthma. *Egypt J Pediat Allergy Immunol* 7: 59-64.
 - Humbert M, Durham SR, Ying S, Kimmitt P, Barkans J, et all. (1996) IL-4 and IL-5 mRNA and protein in bronchial biopsies from patients with atopic and nonatopic asthma: evidence against” intrinsic” asthma being a distinct immunopathologic entity. *American Journal of Respiratory and Critical Care Medicine* 154: 1497-1504.
 - Koopman LP, Van Strien RT, Kerkhof M, Wijga A, Smit HA, det all. (2002) Placebo-controlled Trial of House Dust Mite–impermeable Mattress Covers: Effect on Symptoms in Early Childhood. *American journal of respiratory and critical care medicine* 166: 307-313.
 - Korevaar DA, Westerhof GA, Wang J, Cohen JF, Spijker R, et all. (2015) Diagnostic accuracy of minimally invasive markers for detection of airway eosinophilia in asthma: a systematic review and meta-analysis. *The Lancet Respiratory Medicine* 3: 290-300.
 - Korn S, Both J, Jung M, Hübner M, Taube C, Buhl R (2011) Prospective evaluation of current asthma control using ACQ and ACT compared with GINA criteria. *Annals of Allergy, Asthma and Immunology* 107: 474-479.
 - Kotsimbos TC, Ernst P, Hamid QA (1996) Interleukin-13 and interleukin-4 are coexpressed in atopic asthma. *Proceedings of the Association of American Physicians* 108: 368-373.
 - Kotsimbos TC, Ghaffar O, Minshall EM, Humbert M, Durham SR, et all. (1998) Expression of the IL-4 receptor alpha-subunit is increased in bronchial biopsy specimens from atopic and nonatopic asthmatic subjects. *J Allergy Cli Immunol* 102: 859-866.