

Brine-Shrimp Lethality Bioassay of Different Extracts of the Medicinal Plant *Matricaria* (*Chamomilla*) Flowers

Amal Elnour Ali¹, Shayob Mohammed El Hassan Ali², Suad Abd Elgadir Abdo EL-Rhman³, Mona Abd ELmoneim Mohamed⁴ and Tarig Osman khider^{5*}

¹Pharmacist, Omdurman Hospital

²University of Khartoum, Faculty of Pharmacy

³Alzaiem Alazhari University, Faculty of Education, Department of Chemistry

⁴Department of Pharmacognosy, in Omdurman Islamic University

⁵University of Bahri

ABSTRACT

Objective: The present study aimed to throw some light on phytochemical constituents of *Matricaria* (cammomile) flowers.

Results: The 95% ethanolic crude extract was subjected to column chromatography and nine fractions were collected. Fractions 1-6 have the same Rf value, (using thin layer pre-coated silica gel (0.25cm). were combined and subjected to spectroscopic analysis; infrared spectra showed absorption at 1860, 1637 and 805 cm⁻¹ indicating the presence of c=O, c=c, and c-o groups respectively. Ultra violet absorption at 250-283nm assign for the presence of flavonoids, (lit. 250-280). Finally GC/MS spectra performed the presence flavonoids. Crude extracts (ethanol, methanol, petroleum ether, and chloroform) were investigated for antimicrobial activities against four strains of bacteria (*Staphylococcus aureus*, *Escherichia coli*, *Bacillus subtilis*, *Pseudomonas aeruginosa*, and two fungi: *Aspergillus niger*, and *Candida albicans*) with disc diffusion method, the diameter of growth inhibition zone ranged 15-22mm.

*Corresponding author

Tarig Osman khider, University of Bahri, Sudan. E-mail: tarigosmankhider@gmail.com

Received: November 25, 2022; **Accepted:** December 09, 2022; **Published:** December 13, 2022

Keywords: Medicinal Plants, *Matricaria*, Babonj, Brine Shrimps, Cytotoxicity

Introduction

Natural products from plants are important sources of drugs as several important medicines have been isolated and produced to cure ailments [1-5]. The pharmacological evaluation of extracts of organisms and pure isolates is an area of an essential aspect of the drug discovery process and developments in the techniques have substantially transformed this fact of natural product chemistry [1&3]. "Secondary testing" procedures need more detailed testing in order to select compounds for clinical trials [6].

The main needs of primary bioassay screen should meet the following:

1. The bioassay results should predict some type of therapeutic potential
2. Potentially useful pharmacological activity should not go undetected even though the activity may be either unexpected or unique.
3. The expected nature of the activity should be indicated for further research
4. The primary bioassay screening test should be adapted for

impurities present in a crude extract.

5. The bioassay procedure should be unbiased and it should allow for the coding of all samples, including both "known reference materials (standards) and unknown test samples and the results obtained should be repeatable.
6. The use of crude materials and pure isolates should be carefully studied.
7. The single bioassay screen should as minimum as possible (1-2g) of the crude dry natural material (plant or animal extract).
8. Avoid expensive equipment or a sophisticated laboratory environment The procedure should be compatible with the use of dimethyl sulfoxide (DM50).
9. The procedure should be simple enough to be taught easily to laboratory technicians [6] so that highly trained and qualified researchers are not required for the routine operation of the bioassay program [6,7].

The choice of the screening approach to be adopted generally depends on the target disease as well as on the available information about the target organism (plant, marine animal, etc.) to be studied. For example, if a plant has an ethnopharmacological history of use against a particular disease, then one would logically use a specific bioassay technique (single goal screening) which can predict the

reputed therapeutic activity in order lead which is responsible for that biological activity [7&8].

Chamomile (*Matricaria chamomile* L.) is a well-known medicinal plant species from the Asteraceae family often referred to as the “star among medicinal species.”

German chamomile is used in herbal medicine for a sore stomach, irritable bowel syndrome, and as a gentle sleep aid. It is also used as a mild laxative and is anti-inflammatory and bactericidal. It is Acaricides used against certain mites, such as *Psoroptes cuniculi* [9].

Botanical classification of *Matricaria recutita* or German chamomile:

Scientific Classification	
Kingdom:	Plantae
(unranked):	Angiosperms
(unranked):	Eudicots
(unranked):	Asterids
Order:	Asterales
Family:	Asteraceae
Tribe:	Anthemideae
Genus:	<i>Matricaria</i> L., 1753

Food and Drug Administration (FDA). Approved agent and continue to be one of the major sources of inspiration for drug discovery [10,11].

Natural products may be extracted from plants, a crude (untreated) extract from any one of these sources typically contains novel, structurally diverse chemical compounds [1, 12,13].

Essential oil of chamomile was shown to be a potential antiviral agent against herpes simplex virus type 2 (HSV-2) in vitro P-Potential risks include interference with warfarin and infant botulism in very young children [14].

The present work focus on studying the phytochemical constituents of *Matricaria* (cammomile) flowers with different extracts with reference to brine shrimps.

Materials and Methods

The method described under the heading of brine shrimp lethality assay. The assay reliability correlates with KB cell toxicity assay. The presence of cytotoxic natural products may be detected during the fractionation and isolation of natural product [15,16]. Brine shrimp eggs (*Artemia Sauna*), sea salt, dried yeast, 96-well microphlates, DMSO, pasteur pipelte, binocular microscope (10.30x), methanol.

Brine - shrimp microwill cytotoxicity assay typically consists of the following assay steps:

1. Artificial sea water is prepared by dissolving sea salt in distilled water (40g/lit) supplemented with 6 mg/lit, dried yeast.
2. Brine shrimp eggs (*Artemia sauna*) are hatched in artificial sea water during 48 hours incubation iii a warm room (22—29°C).
3. Brine shrimp larvae (nauplii) are collected with a Pasteur pipette are anring the organisms to one side of the vessel with a light so ire\auplii are separated from the eggs by pipetting

them 2-3 times in small beakers containing sea water.

4. The test sample 20 mg of crude extracts or 4 mg for pure compound) is made up to lmg.ml in artificial sea water (water insoluble compounds or extracts can be dissolved in 5 m DM50 prior to adding sea water).
5. Serial dilutions are made in wells of 96-well in triplicates in 100 P1 sea water (Figure 1) and (Table 1 Supplementary materials)
6. A suspension of nauplii containing 10-15 brine shrimp larvae (100 ml) arc added to each well with the help of a Pasteur pipette and the covered microwell plate incubated at 22-29°C for 24 hours.
7. The plates are then examined under a binocular microscope (12.5x) and the number of dead (non-mobile) nauplii in each well counted.
8. 100 p1 methanol is then added to microwell and after I 5 iii in tcs the total nuin her of annaips in each well is counted.
9. LC50 values are then calculated by using prop analysis.

1. UV lamp.
2. Test fungi such as *Aspergillus niger*, *Ascochyta pisi*, *Bally tis cinerea*, *Colletrichum lindemuthlanun*, *Fusarium culrnorum*, *Penicillium expansum*, *Glomerella cingulato*, *Cladosporium clfcumel' inum+* (Caution)
3. Organic solvents S. TLC tanks.
4. Autoclave.
5. Glucose.
6. Incubator.
7. Hot air blower.
8. Test sample (crude extract, pure natural product or synthetic compound the chemicals applied were given in Table 1 supplementary materials).

Since the RF value of the spot A is identical with that of the spot C (containing caffeine) hence the given sample solution contains caffeine.

Layer: silica gel

Solvent system: Benzene and ethanol in the ratio of 80:20 respectively.

Detection: By iodine in chloroform 1%.

Sample solution

Small amount of powdered drug is moistened with calcium hydroxide and distilled water to form a smooth paste and then extracted with chloroform. The chloroform layer is separated and evaporated to dryness on a water bath the residue is dissolved in 2 ml of methanol .0.1 ml is spotted by using capillary tube.

TLC plates were viewed under UV light at 254 and 366 nm for fluorescence or quenching spots. Then sprayed with concentrated H₂SO₄.

R₁ values were calculated as follows:

$$R_1 \text{ value} = \frac{\text{Distance moved by the solute}}{\text{Distance moved by the solvent}}$$

The coating materials were usually applied as aqueous slurries. Slurry was made by mixing 30g of silica gel G with 60 mL of distilled water in a motor until it was of uniform consistency and free of air bubbles. The slurry was spread using a dragendroff's reagent spreader at 0.25mm thick layer on five glass plates (20x20 cm)

The coated plates were dried at room temperature, then placed vertically in an oven and activated by heating to 10 0C for 30 minutes.

Column chromatography was performed on a glass column packed with silica gel. The extracts were chromatographed after being

absorbed onto a small amount of packing material or applied to the top of column by pipette.

Results and Discussion

Phytochemical screening of Matricaria chamomile indicated the presence of secondary metabolites gave positive result for Alkaloids, Flavonoids, Antraquinones, Steroids gave Tannins, Saponins and Glycosides as expressed in (Table 1).

Table 1: Extraction of matricaria (chamomilla) flowers with water

1	2	3	4	5	6						
Con. mg/ml	Mortality mean %	Log con+1 x	Empirical prop	Expected Prop.	Work. Prop.	Wt. coeff.	w	w.x	Wy	Wx2	Wxy
1000	40	4	4.75	4.75	4.75	0.627	6.7	25.08	29.78	100.	119.12
100	40	3	4.75	4.40	4.78	0.558	5.57	16.74	24.55	50.2	73.65
10	20	2	4.16	4.16	0.503	10.06	20.06	20.92	20.12	2012	41.84

$Y = y^{\circ} + kp$

Kp= percentage mortality

$y^{\circ} = 5L88/16.88 = 3.07$

$74.75/16.88 = 4.43$

$V50 = 1/0.423 (1/1/sw + 0.164 / x) = 2.364 (0.043 + 2.002 + 0.086) = 10.0086$

$MI = M \pm 1.96 \times 0.093 = 3.02 + 0.182 = 3.2 \text{ shift} / \log$

Factors $3.02 - 0.182 = 2.838 \text{ shift} / \log = 689$

LC50 = 1036 mg/ml >1000

The ethyl acetate extract was the best solvent gave positive result for all types of bacteria, especially staphylococcus aureus as shown in Table 2.

Table 2: Antimicrobial activities of water extract

	An	C	P	E. coli	B. subtilis	A spergillus niger
Chamomile	14	18	14	17	14	20

Antimicrobial activity were expressed as inhibition diameter zone in millimeters (mm) N.A (no activity) 4mm B =Bacillus subtilis ATCC 6633 P =Pseudomonas aureginosa ATCC27953 staph staphylococcus Aureus ATCC29213. E. coli= Ecoh esherchia coli ATCC25922. C= Candida albicans NRRL Y477 and An A spergillus niger NRRL.3

Toxicity Assay

The chloroform and ethyl acetate extracts gave the best compound separation for Matricaria chamomile. Concentrated ethanol extracts isolated three flavonoids' compounds (Figure2).

The maximum absorption for three compounds at peak with RF (Figure 1):

- 0.333 compound A
- 0.305 compound B
- 0.324 compound C

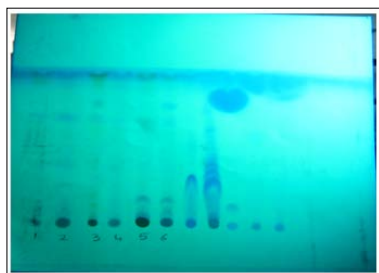


Figure 1: Column chromatography for (A) and (B) matricaria ethyl acetate extraction with different separated fraction from silica gel and eluted with different polar solvents system by increasing the methanol percentage in (water methanol system)

The present study focused on the larvicidal as well as the Matricaria chamomilla activity of crude plant extract, comparatively more effective than other mosquito larvae of Matricaria chamomilla. In a study of Arivoli and coworkers [17,18] had reported that larvicidal property of this. ant in ethyl acetate extract against Brine Shrimp larvae with an LC50 value of 1.63 g/L. The comparison of safety two method the mosquito larvae was found to be significantly effective method to detect the Matricaria Toxicity as a cheap and available method.

Conclusion

The phytochemical screening of Matricaria chamomile flowers reflect the presence of flavonoids glycosides, tannins, anthraquinones, triterpense and sterols, saponins and alkaloids. Toxicity was carried out with Brine Shrimp, in comparison using of mosquito larvae was found to be significantly effective method to detect the Matricaria Toxicity as a cheap and available method The purification and isolation of the crude extracts solvent under study is required. The application of analysis with High Performance Liquid Chromatography, Ultraviolet-visible spectroscopy or ultraviolet-visible spectrophotometry were not available in our labs.

Declarations

Acknowledgments

The authors would like to express they're thanks to Faculty of Pharmacy University of Elnilin Sudan for using their facilities and support, with all data and materials are available.

Authors' contributions AEA and MAM were carried out practical and technical work and revised the draft manuscript. SME designed the work and review the draft manuscript, SAA and TOK were collected the samples and wrote the draft manuscript. All authors read and approved the final manuscript.

Competing Interests

Not applicable.

Availability of data and materials

We have already included most of data in the manuscript, the lab and data, some data not included in the manuscript attached as Additional file.

Consent for publication

Not applicable.

Ethics approval and consent to participate

Not applicable.

Funding

Not applicable

References

1. David J Newman (2007) Gordon M Cragg. Natural products as sources of new drugs over the last 25 years. *J. Nat. Prod* 70: 461-477.
2. Tahani Osman Issa, Ahmed Ibrahim Mohamed Ahmed, Yahya Sulieman Mohamed, Sakina Yagi, Abdelrafie Mohamed Makhaw, et al. (2020) Insecticidal, and Antidiabetic Activities of *Senna occidentalis* Linn Root. *Biochemistry Research International*. 8810744: 9.
3. Fatma Sir ElKhatim, Tahani Osman Issa, Sulman Suliman, Yahya Sulieman Mohamed, Abdelrafie Mohamed Makhawi, et al. (2019) Phytochemical Screening and Antimicrobial Activity of Different Extractions of Sudanese *Stylochiton borumensis* Roots (Araceae). *World Applied Sciences Journal* 37: 700-709.
4. Telal M Najeeb, Tahani O Issa, Yahya S Mohamed, Reem H Ahmed, Abdelrafie M Makhawi, et al. (2020) Phytochemical Screening, Antioxidant and Antimicrobial Activities of *Dalbergia melanoxylon* Tree. *World Applied Sciences Journal* 36: 826-833.
5. Tarig O Khider (2018) A Look at Some Medicinal Plants from Sudan-Mini Review. *Journal of Advanced Pharmacy Research* 2: 238-246.
6. Tedder J M, Nechvatel A, Murray A W, Carnduff J (1972) *Basic Organic Chemistry*, Part 4, London.
7. Denizot F, Lang R (1986) Rapid colorimetric assay for cell growth and survival. Modifications to the tetrazolium dye procedure giving improved sensitivity and reliability. *J. Immunol. Methods*. 89: 271-277.
8. Atta-ur- Rahman, Allen B Reitz, M Iqbal Choudhary (2015) *Frontiers in Medicinal Chemistry*. Bentham Science Publishers 7: 422.
9. McLaughlin, JL McLaughlin, J McLaughlin J L (1991) Crown gall tumours on potato discs and brine shrimp lethality: two simple bioassays for higher plant screening and fractionation. *J. Methods Plant Biochem* 6: 1-32.
10. Ahmed Taha, Hashim Alsayed (2000) Brine Shrimp Bioassay of Ethanol Extracts of *Sesuvium verrucosum*, *Salsola baryosma* and *Zygophyllum quatarense* Medicinal Plants from Bahrain. *Phytother. Res* 14: 48-50.
11. Qaher Mandeel, Ahmed Taha (2005) Assessment of invitro. Antifungal Activities of Various Extracts of Indigenous Bahraini Medicinal Plants, *Pharmaceutical Biology*. DOI: 10.1080/13880200590951766
12. Andres C, Chen WC, Ollert M, Mempel M, Darsow U, et al. (2008) Anaphylactic reaction to chamomile tea. *Allergology International* 58: 135-136.
13. Firuzeh Charousaei, Azam Dabirian, Faraz Mojab (2011) Using chamomile solution or a 1% topical hydrocortisone ointment in the management of peristomal skin lesions in colostomy patients: results of a controlled clinical study. *Ostomy Wound Manage* 57: 28-36.
14. Raenu Yucharoen, Sunee Chansakaow, Yingmanee Tragoolpua (2011) Inhibitory effect of aromatic herbs, lavender, sage and chamomile against herpes simplex virus infection. *African Journal of Biotechnology* 10: 15394-15401.
15. Brice A P, Wilson, Christopher C (2020) Thornburg, Curtis J. Henrich, c Tanja Grkovic ,Barry R. O'Keefe. Creating and screening natural product libraries. *Natural Product Reports* 37: 893-918.
16. Emilio Ghisalberti (2007) Detection and Isolation of Bioactive Natural Products. in *Book Bioactive Natural Products* 11-76.
17. Arivoli, S. Tennyson S, Martin JJ (2011) Larvicidal efficacy of *Vernonia cinerea* (L.) (Asteraceae) leaf extracts against the filarial vector *Culex quinquefasciatus* Say (Diptera: Culicidae). *Journal of Biopesticides* 4: 37-42.
18. Arivoli S, Tennyson S, Ravindran J (2012) Larvicidal Efficacy of Plant Extracts against the Malarial Vector *Anopheles stephensi* Liston (Diptera: Culicidae). *World Journal of Medical Sciences* 7: 77-80.

Copyright: ©2022 Tarig Osman khider, et al. This is an open-access article distributed under the terms of the Creative Commons Attribution License, which permits unrestricted use, distribution, and reproduction in any medium, provided the original author and source are credited.